

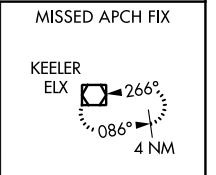
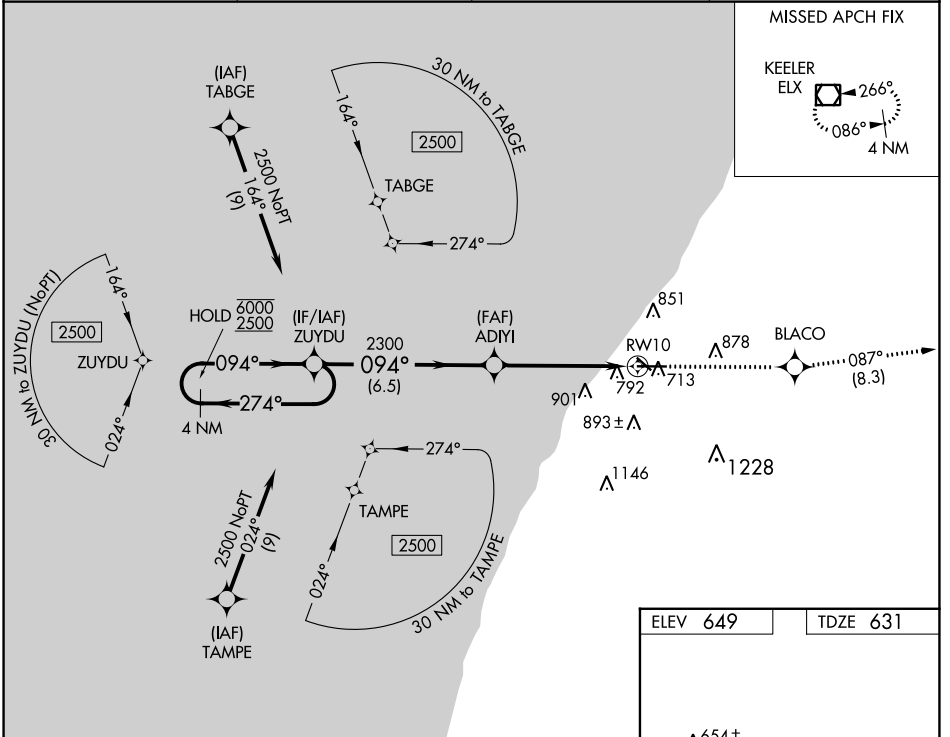
WAAS CH <b>86912</b> <b>W10A</b>	APP CRS <b>094°</b>	Rwy Idg TDZE Apt Elev	<b>6006</b> <b>631</b> <b>649</b>
----------------------------------------	------------------------	-----------------------------	-----------------------------------------

# RNAV (GPS) RWY 10

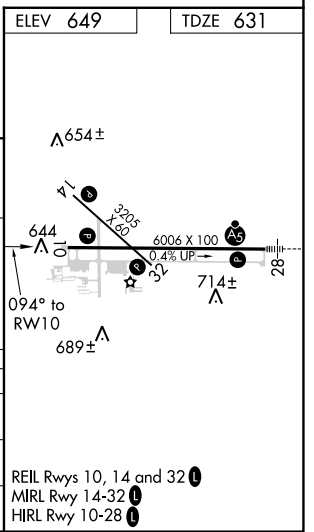
SOUTHWEST MICHIGAN RGNL (BEH)

RNP APCH.		MISSED APPROACH: Climb to 2500 direct BLACO and on track 087° to ELX VOR/DME and hold.	
<p>▼ Rwy 10 helicopter visibility reduction below ¾ SM NA. ▲ For uncompensated Baro-VNAV systems, LNAV/VNAV NA below -20°C or above 54°C.</p>			

ASOS <b>121.55</b>	SOUTH BEND APP CON* <b>118.55 257.8</b>	SOUTH BEND CLNC DEL <b>119.7</b>	UNICOM <b>123.0 (CTAF) 0</b>
-----------------------	--------------------------------------------	-------------------------------------	---------------------------------



4 NM Holding Pattern		ZUYDU	2500	BLACO	ELX
6000 ← 274°		→ 094°	ADIYI	tr	087°
2500			2300	* 1.4 NM to RWY 10	
GP 3.00°				* LNAV only	
TCH 35					
		6.5 NM	3.7 NM	1.4 NM	
CATEGORY	A	B	C	D	
LPV DA		881-7/8	250 (300-7/8)		
LNAV/VNAV DA		1068-1½	437 (500-1½)		
LNAV MDA	1100-1	469 (500-1)	1100-1¾	469 (500-1¾)	



EC-1, 01 DEC 2022 to 29 DEC 2022

EC-1, 01 DEC 2022 to 29 DEC 2022