

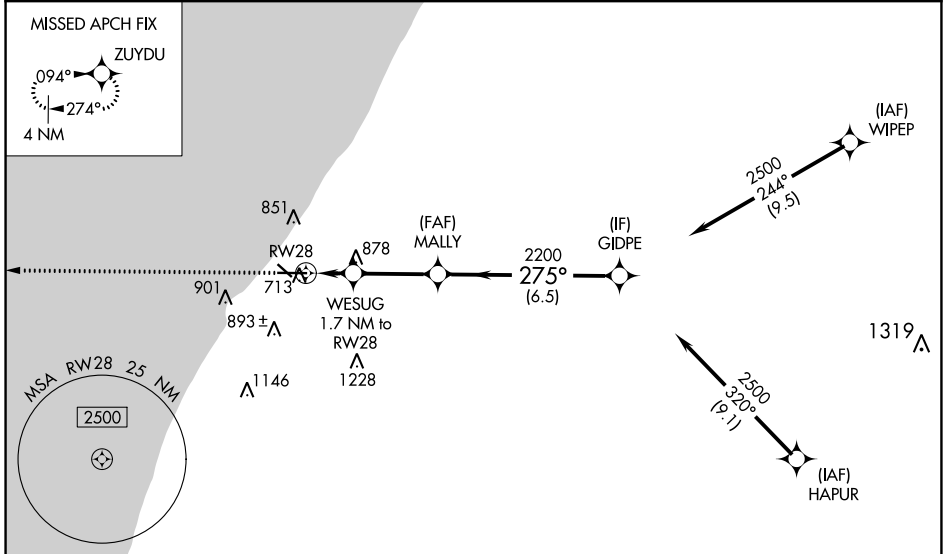
WAAS CH <b>45822</b> <b>W28A</b>	APP CRS <b>275°</b>	Rwy Idg TDZE Apt Elev	<b>6006</b> <b>649</b> <b>649</b>
--	------------------------	-----------------------------	---

# RNAV (GPS) RWY 28

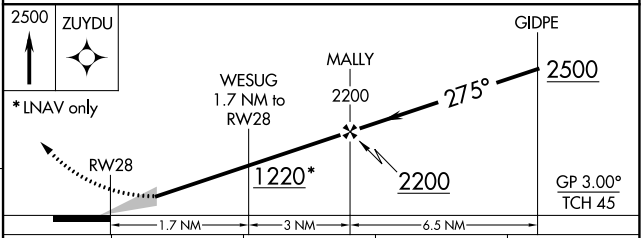
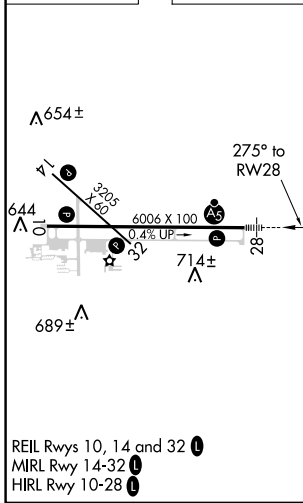
SOUTHWEST MICHIGAN RGNL (BEH)

RNP APCH.		MALSR 	MISSED APPROACH: Climb to 2500 direct ZUYDU and hold.
For uncompensated Baro-VNAV systems, LNAV/VNAV NA below -19°C (-2°F) or above 39°C (102°F). Circling Rwy 14, 32 NA at night.			

ASOS <b>121.55</b>	SOUTH BEND APP CON* <b>118.55 257.8</b>	SOUTH BEND CLNC DEL <b>119.7</b>	UNICOM <b>123.0 (CTAF) 0</b>
-----------------------	--	-------------------------------------	---------------------------------



ELEV 649	TDZE 649
----------	----------



CATEGORY	A	B	C	D
LPV DA		849-½	200 (200-½)	
LNAV/VNAV DA		941-½	292 (300-½)	
LNAV MDA	1140-½	491 (500-½)	1140-1	491 (500-1)
CIRCLING	1140-1 491 (500-1)	1160-1 511 (600-1)	1300-1¾ 651 (700-1¾)	1340-2 691 (700-2)

EC-1, 01 DEC 2022 to 29 DEC 2022

EC-1, 01 DEC 2022 to 29 DEC 2022