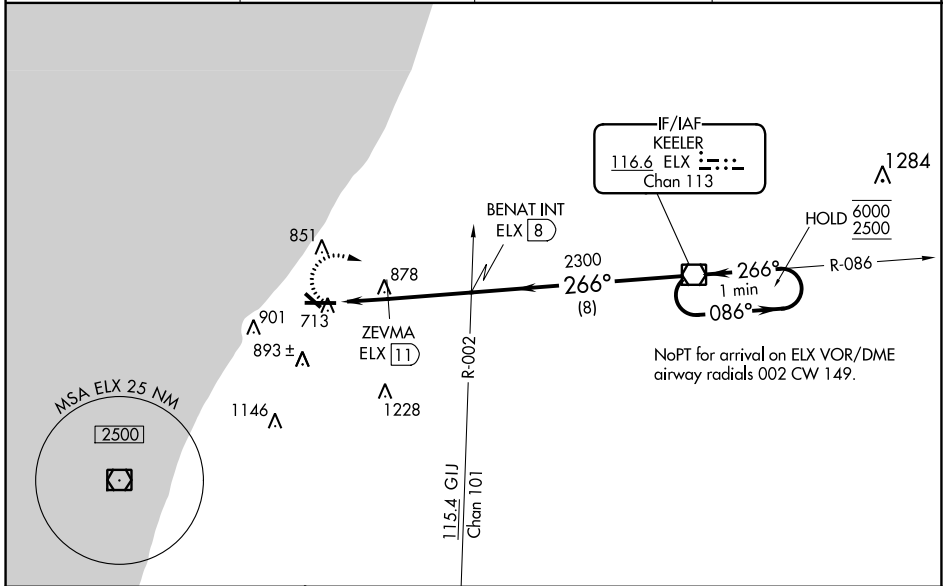


VOR/DME ELX 116.6	APP CRS 266°	Rwy Idg TDZE Apt Elev	6006 649 649
Chan 113			

VOR RWY 28

SOUTHWEST MICHIGAN RGNL (BEH)

DME required.		MALS R MISSED APPROACH: Climbing right turn to 2500 direct ELX VOR/DME and hold.	
Circling Rwy 14, 32 NA at night. For inop ALS, increase S-28 Cats A and B visibility to 1 SM. ZEVMA fix minimums: for inop ALS, increase S-28 Cats A and B visibility to 1 SM and Cats C and D visibility to 1 3/8 SM.			
ASOS 121.55	SOUTH BEND APP CON * 118.55 257.8	SOUTH BEND CLNC DEL 119.7	UNICOM 123.0 (CTAF) 0



ELEV 649	TDZE 649	2500	ELX	
REIL Rwys 10, 14 and 32 0	MIRL Rwy 14-32 0	HIRL Rwy 10-28 0		
FAF to MAP 4.9 NM				
Knots	60	90	120	150 180
Min:Sec	4:54	3:16	2:27	1:58 1:38
CATEGORY	A	B	C	D
S-28	1300-1	651 (700-1)	1300-1 3/8	651 (700-1 3/8)
CIRCLING	1300-1	651 (700-1)	1300-1 3/4	1340-2 1/4 691 (700-2 1/4)
ZEVMA FIX MINIMUMS				
S-28	1140-3/4	491 (500-3/4)	1140-1	491 (500-1)
CIRCLING	1140-1	1160-1	1300-1 3/4	1340-2 1/4 691 (700-2 1/4)

EC-1, 01 DEC 2022 to 29 DEC 2022

EC-1, 01 DEC 2022 to 29 DEC 2022