

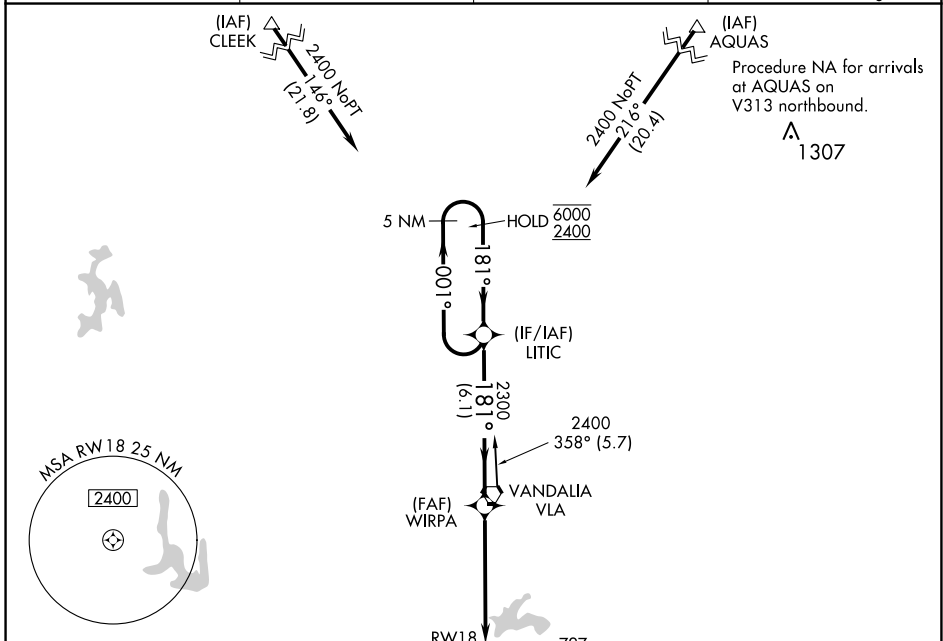
APP CRS	Rwy ldg	3751
181°	TDZE	534
	Apt Elev	537

RNAV (GPS) RWY 18

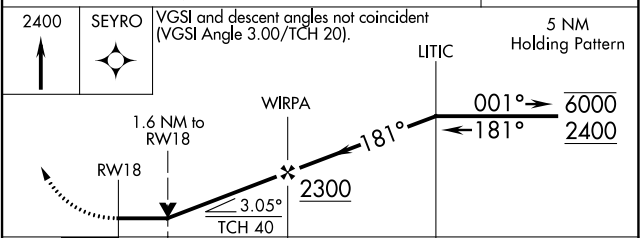
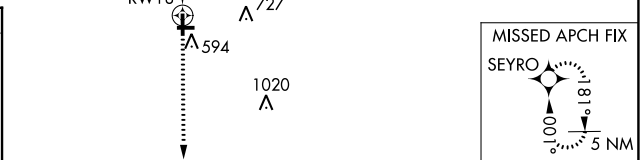
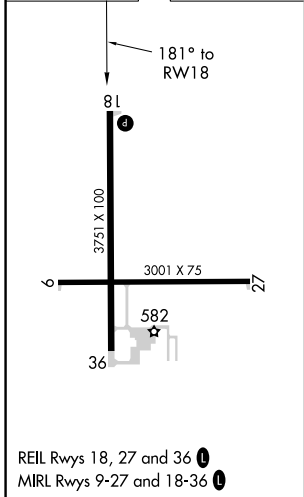
VANDALIA MUNI (VLA)

RNP APCH.	MISSED APPROACH: Climb to 2400 direct SEYRO and hold.
<p>▼ Rwy 18 helicopter visibility reduction below ¼ SM NA. When local altimeter setting not received, use Salem altimeter setting; increase all MDAs 60 feet and visibility LNAV Cats C and D and Circling Cat D ¼ SM.</p>	

AWOS-AV 122.8	SLO AWOS-3 118.525	KANSAS CITY CENTER 124.3 269.15	UNICOM 122.8(CTAF) 0
-------------------------	------------------------------	---	--------------------------------



ELEV 537	TDZE 534
----------	----------



CATEGORY	A	B	C	D
LNAV MDA	1060-1	526 (600-1)	1060-1½	526 (600-1½)
CIRCLING	1060-1	523 (600-1)	1060-1½ 523 (600-1½)	1220-2¼ 683 (700-2¼)

EC-3, 01 DEC 2022 to 29 DEC 2022

EC-3, 01 DEC 2022 to 29 DEC 2022