


LOC/DME I-CHO 111.7 Chan 54	APP CRS 030°	Rwy Ldg TDZE Apt Elev 6801 640 640
--	------------------------	--

ILS or LOC RWY 3

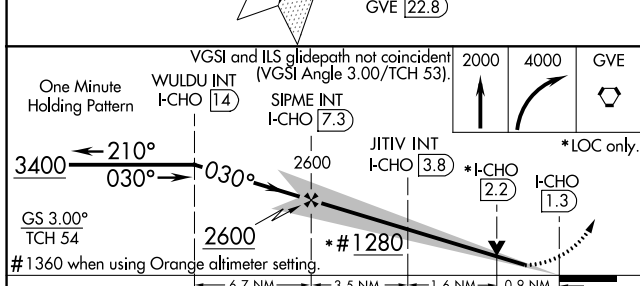
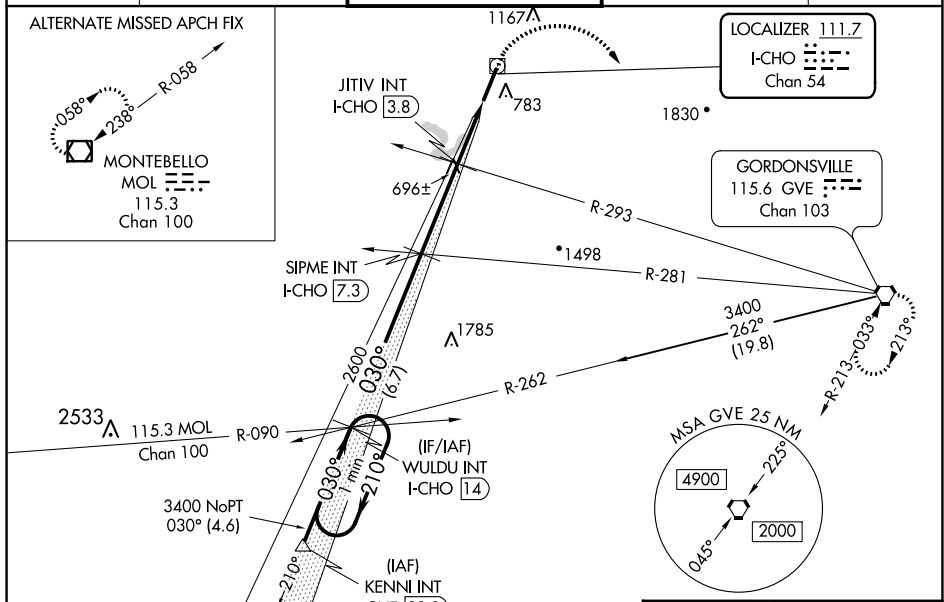
CHARLOTTESVILLE-ALBEMARLE (CHO)

⚠ When local altimeter setting not received, use Orange altimeter setting and increase S-ILS 3 DA to 912 and all MDA 80 feet; increase S-LOC 3 Cats C/D, Circling Cats C/D, JITIV fix minimums S-LOC 3 Cats C/D, and JITIV fix minimums Circling Cats C/D visibility ¼ mile. VDP NA when using Orange altimeter setting. For inop ALS when using Orange altimeter setting increase S-ILS 3 all Cats visibility to ¾, S-LOC 3 Cats C, D visibility to 2 miles, and S-LOC 3 JITIV fix minimums Cat C, D visibility to 1½ mile.

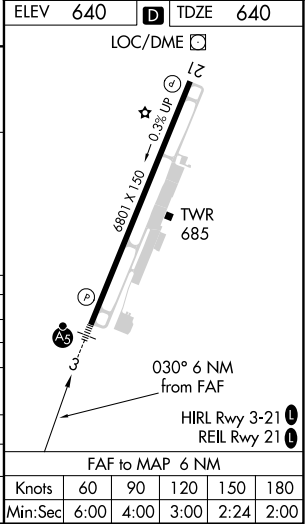
MALS 

MISSED APPROACH:
Climb to 2000 then climbing right turn to 4000 direct GVE VORTAC and hold.

ATIS 118.425	POTOMAC APP CON 132.85 323.125	CHARLOTTESVILLE TOWER ★ 124.5 (CTAF) 338.275	GND CON 121.9 338.275	UNICOM 122.95
------------------------	--	--	---------------------------------	-------------------------



CATEGORY	A	B	C	D
S-ILS 3	840-½ 200 (200-½)			
S-LOC 3	1280-½	640 (700-½)	1280-1⅓	640 (700-1⅓)
C CIRCLING	1280-1	640 (700-1)	1500-2½	1500-2¾
JITIV FIX MINIMUMS (DUAL VOR RECEIVERS OR DME REQUIRED)				
S-LOC 3	980-½	340 (400-½)	980-⅝	340 (400-⅝)
C CIRCLING	1100-1	460 (500-1)	1500-2½	1500-2¾



NE-3, 01 DEC 2022 to 29 DEC 2022

NE-3, 01 DEC 2022 to 29 DEC 2022

Knots	60	90	120	150	180
Min:Sec	6:00	4:00	3:00	2:24	2:00