

WAAS CH <b>45602</b> <b>W21B</b>	APP CRS <b>210°</b>	Rwy ldg TDZE Apt Elev	<b>6801</b> <b>626</b> <b>640</b>
--	------------------------	-----------------------------	---

# RNAV (GPS) Z RWY 21

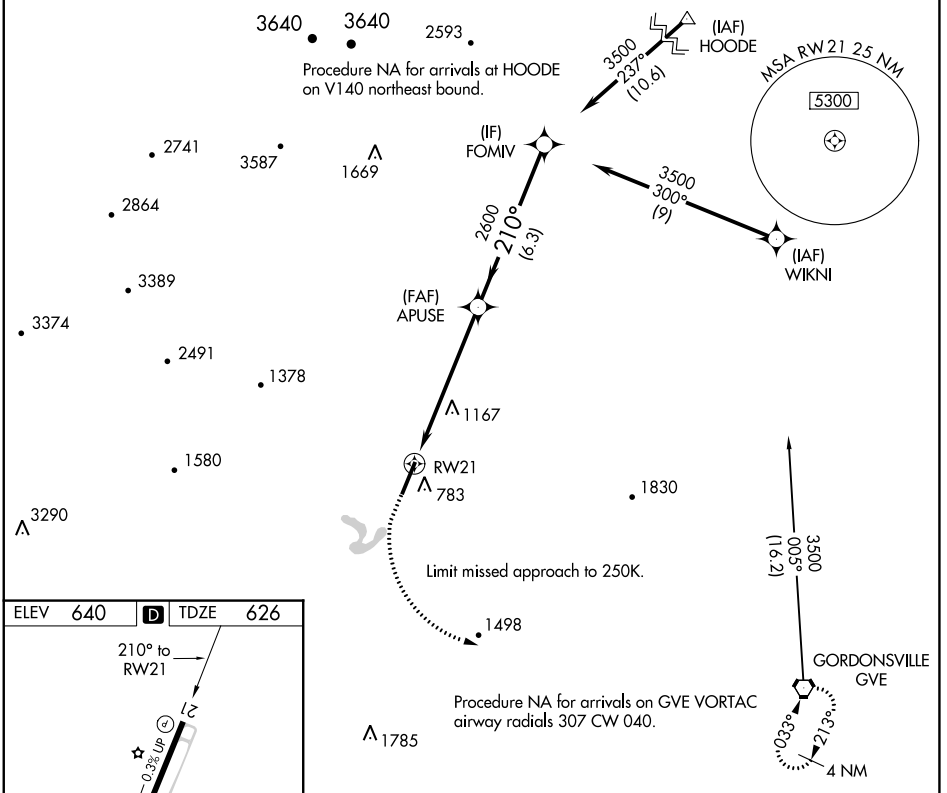
CHARLOTTESVILLE-ALBEMARLE (CHO)

RNP APCH.

Baro-VNAV NA when using Staunton/Waynesboro/Harrisonburg altimeter setting.  
 For uncompensated Baro-VNAV systems, procedure NA below -16°C or above 54°C.  
 When local altimeter setting not received, use Staunton/Waynesboro/Harrisonburg altimeter setting and increase all DA 130 feet and LPV visibility 1/8 mile.

MISSED APPROACH: Climb to 1100, then climbing left turn to 4000 direct GVE VORTAC and hold.

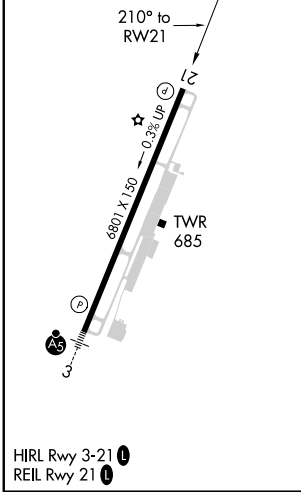
ATIS <b>118.425</b>	POTOMAC APP CON <b>132.85 323.125</b>	CHARLOTTESVILLE TOWER ★ <b>124.5 (CTAF) 0 338.275</b>	GND CON <b>121.9 338.275</b>	UNICOM <b>122.95</b>
------------------------	--	--	---------------------------------	-------------------------



NE-3, 01 DEC 2022 to 29 DEC 2022

NE-3, 01 DEC 2022 to 29 DEC 2022

ELEV 640	<b>D</b>	TDZE 626
----------	----------	----------



1100	4000	GVE	FOMIV	
APUSE 2600	RWY 21		3500	
6.1 NM		6.3 NM		
GP 3.00°	TCH 50			
CATEGORY	A	B	C	D
LPV DA	826-1 200 (200-1)			
LNAV/VNAV DA	1588-4 962 (1000-4)			