

VOR/DME PRX <b>113.6</b> Chan <b>83</b>	APP CRS <b>350°</b>	Rwy Idg TDZE Apt Elev	<b>6002</b> <b>532</b> <b>548</b>
---	------------------------	-----------------------------	---

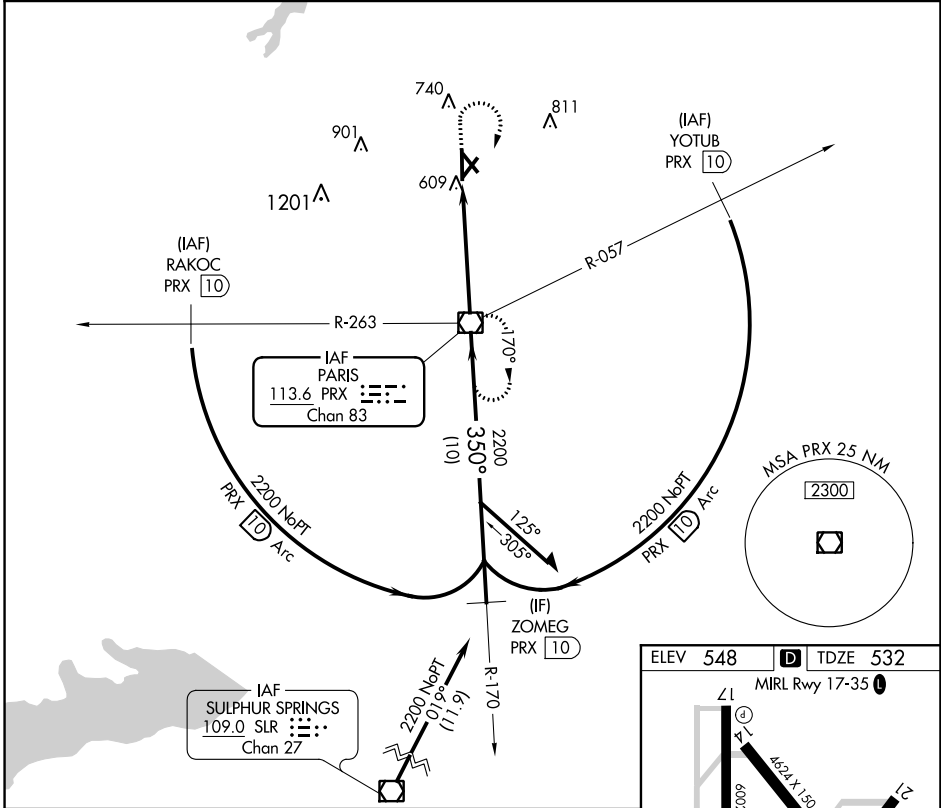
# VOR RWY 35

COX FLD (PRX)

**⚠** When local altimeter setting not received, use Sulphur Springs altimeter setting and increase all MDAs 80 feet; increase Circling Cats C/D visibility ¼ SM. Visibility reduction by helicopters NA. VDP NA when using Sulphur Springs altimeter setting.

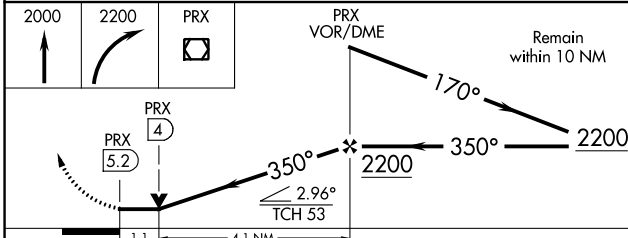
**MISSED APPROACH:** Climb to 2000 then climbing right turn to 2200 direct PRX VOR/DME and hold.

AWOS-3PT <b>119.675</b>	FORT WORTH CENTER <b>124.875</b>	UNICOM <b>122.975 (CTAF)</b> <b>📻</b>
----------------------------	-------------------------------------	--



SC-2, 01 DEC 2022 to 29 DEC 2022

SC-2, 01 DEC 2022 to 29 DEC 2022



ELEV 548	<b>D</b> TDZE 532
----------	-------------------

MIRL Rwy 17-35 **📻**

35 350° 5.2 NM from FAF

FAF to MAP 5.2 NM

Knots	60	90	120	150	180
Min:Sec	5:12	3:28	2:36	2:05	1:44

CATEGORY	A	B	C	D
S-35	940-1 408 (500-1)		940-1½ 408 (500-1½)	940-1¼ 408 (500-1¼)
CIRCLING	980-1 432 (500-1)	1060-1 512 (600-1)	1100-1½ 552 (600-1½)	1220-2¼ 672 (700-2¼)