

PALESTINE, TEXAS

AL-871 (FAA)

22083

VOR/DME FZT 111.4 Chan 51	APP CRS 202°	Rwy Idg TDZE 416 Apt Elev 423	5005 416 423
---	------------------------	---	---

VOR RWY 18

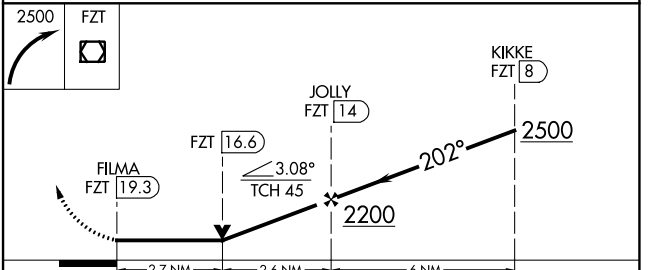
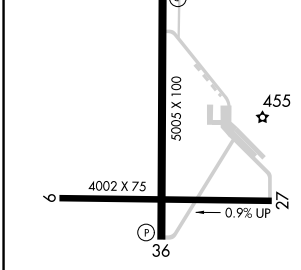
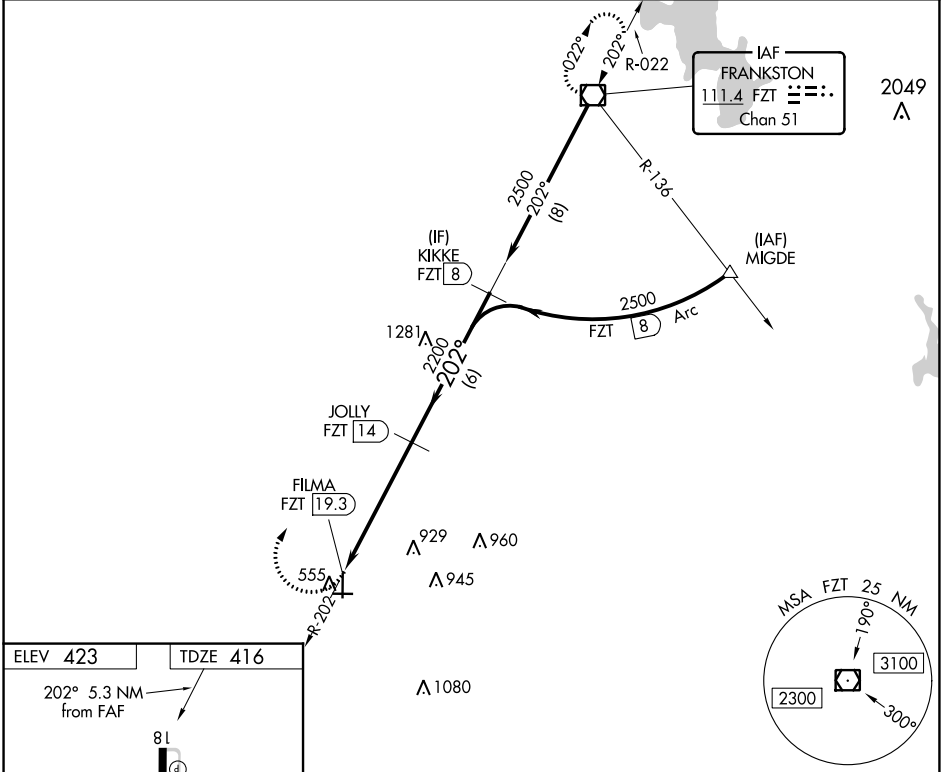
PALESTINE MUNI (PSN)

DME required.

NA Rwy 18 helicopter visibility reduction below 3/4 SM NA.

MISSING APPROACH: Climbing right turn to 2500 direct FZT VOR/DME and hold.

AWOS-3PT 118.025	FORT WORTH CENTER 135.25 265.1	UNICOM 122.7 (CTAF)
----------------------------	--	-------------------------------



	A	B	C	D
S-18	1320-1¼	904 (900-1¼)	1320-2½	904 (900-2½)
C CIRCLING	1320-1¼	897 (900-1¼)	1360-2¾ 937 (1000-2¾)	1360-3 937 (1000-3)

PALESTINE, TEXAS
MIRL Rwy 36
MIRL Rwy 18-36 and 9-27

31°47'N - 95°42'W

PALESTINE MUNI (PSN) VOR RWY 18

SC-5, 01 DEC 2022 to 29 DEC 2022

SC-5, 01 DEC 2022 to 29 DEC 2022