

WAAS CH 40420 W18A	APP CRS 178°	Rwy Idg TDZE 206 Apt Elev 206	5998
--	------------------------	---	-------------

RNAV (GPS) RWY 18

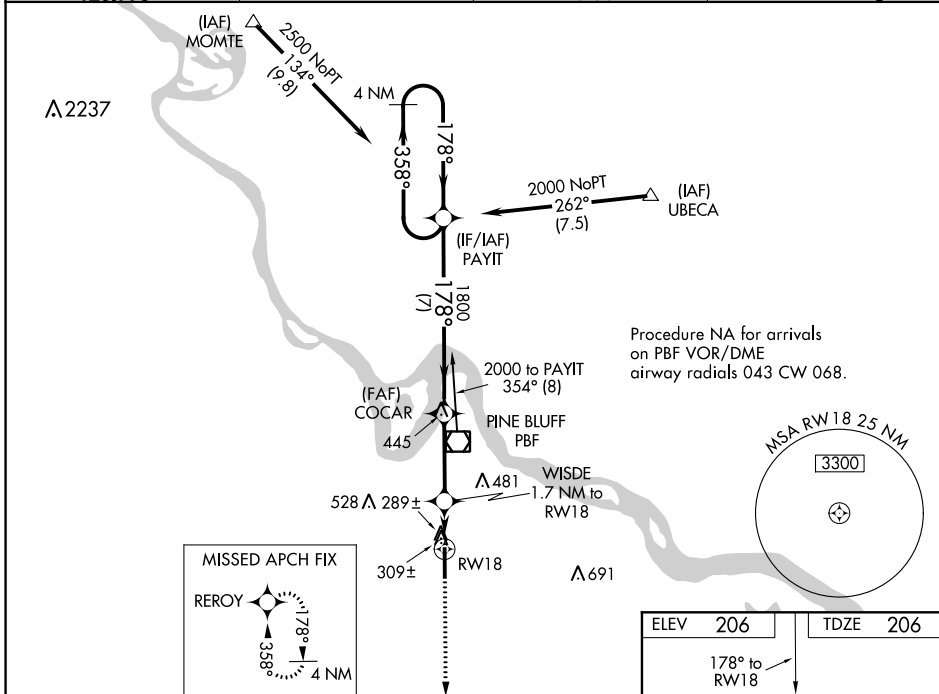
PINEBLUFF RGNL/GRIDER FLD (PBF)

Inop table does not apply to LPV. Baro-VNAV and VDP NA when using Stuttgart altimeter setting. For uncompensated Baro-VNAV systems, LNAV/VNAV NA below -1.5°C (5°F) or above 42°C (107°F). DME/DME RNP-0.3 NA. Rwy 18 helicopter visibility reduction below ¾ SM NA. When local altimeter setting not received, use Stuttgart altimeter setting; increase LPV DA to 534 feet; increase LNAV/VNAV DA to 723 feet and visibility all Cats ¼ SM; increase all MDA 80 feet and LNAV Cats C/D and Circling Cats C/D visibility ¼ SM. For inop MALSRS increase LNAV Cats A/B visibility to 1 and Cats C/D visibility to 1½. For inop MALSRS when using Stuttgart altimeter setting, increase LPV visibility all Cats ¼ mile, increase LNAV visibility Cats A/B ¼ mile and Cats C/D ⅜ mile.

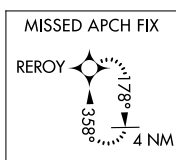
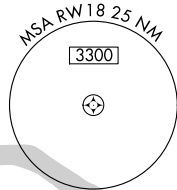


MISSED APPROACH:
Climb to 2000 direct REROY and hold.

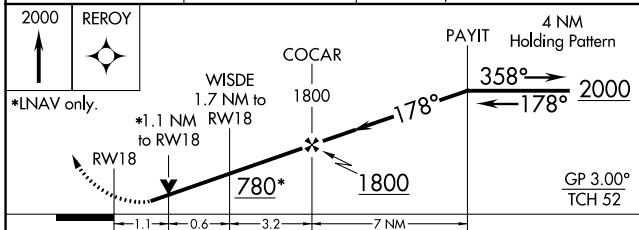
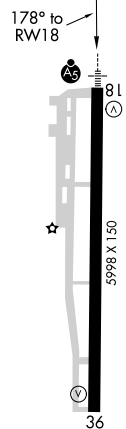
ASOS 120.775	LITTLE ROCK APP CON 119.85 353.6	CLINC DEL 119.85	UNICOM (CTAF) 123.0
------------------------	--	----------------------------	----------------------------



Procedure NA for arrivals on PBF VOR/DME airway radials 043 CW 068.



ELEV 206	TDZE 206
----------	----------



CATEGORY	A	B	C	D
LPV DA		459-¾	253 (300-¾)	
LNAV/VNAV DA		648-1	442 (500-1)	
LNAV MDA		600-¾	394 (400-¾)	
CIRCLING	660-1 454 (500-1)	680-1 474 (500-1)	840-1¾ 634 (700-1¾)	880-2¼ 674 (700-2¼)

MIRL Rwy 18-36

SC-1, 01 DEC 2022 to 29 DEC 2022

SC-1, 01 DEC 2022 to 29 DEC 2022