

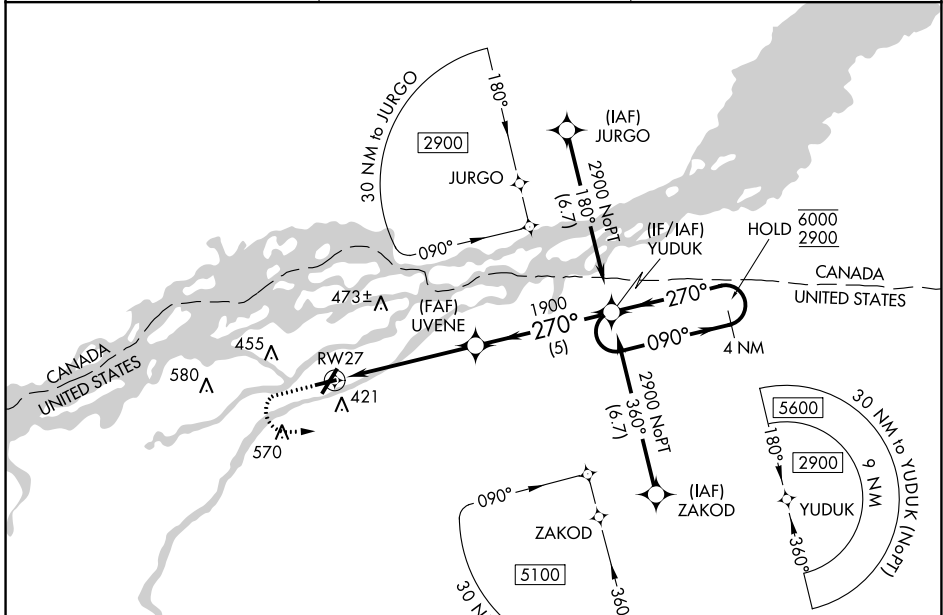
APP CRS	Rwy Idg	4000
270°	TDZE	205
	Apt Elev	221

RNAV (GPS) RWY 27

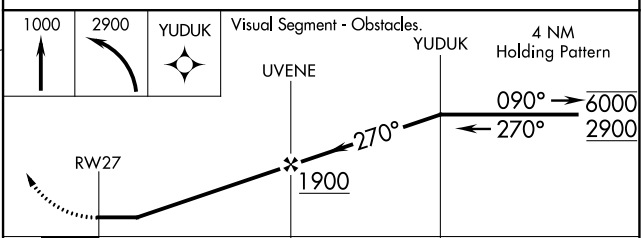
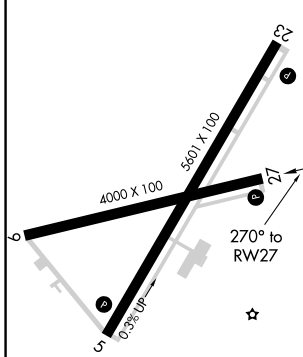
MASSENA INTL-RICHARDS FLD (MSS)

RNP APCH - GPS.		MISSED APPROACH: Climb to 1000 then climbing left turn 2900 direct YUDUK and hold.
▼	Rwy 27 helicopter visibility reduction below 1 SM NA.	
▲	Straight-in Rwy 27 NA at night, Circling Rwy 9, 23, 27 NA at night.	

ASOS 128.075	BOSTON CENTER 135.25 377.1	UNICOM 123.0 (CTAF) 0
------------------------	--------------------------------------	---------------------------------



ELEV 221	D	TDZE 205
----------	----------	----------



CATEGORY	A	B	C	D
LNAV MDA	680-1	475 (500-1)	680-1 $\frac{3}{8}$	475 (500-1 $\frac{3}{8}$)
C CIRCLING	740-1	519 (600-1)	880-1 $\frac{3}{4}$ 659 (700-1 $\frac{3}{4}$)	880-2 659 (700-2)

REIL Rws 5, 9 and 27 **0**
 HIRL Rwy 5-23 **0**
 MIRL Rwy 9-27 **0**

NE-2, 01 DEC 2022 to 29 DEC 2022

NE-2, 01 DEC 2022 to 29 DEC 2022