

LOC I-GNKG 110.9	APP CRS 311°	Rwy ldg TDZE Apt Elev 6499 681 694
----------------------------	------------------------	--

ILS or LOC RWY 31

LAGRANGE/CALLAWAY (LGC)

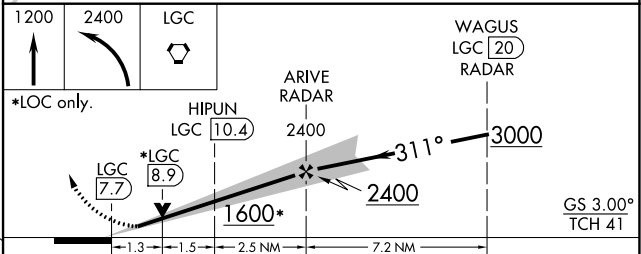
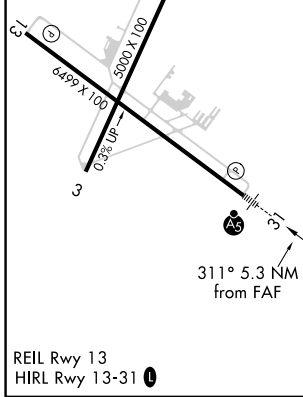
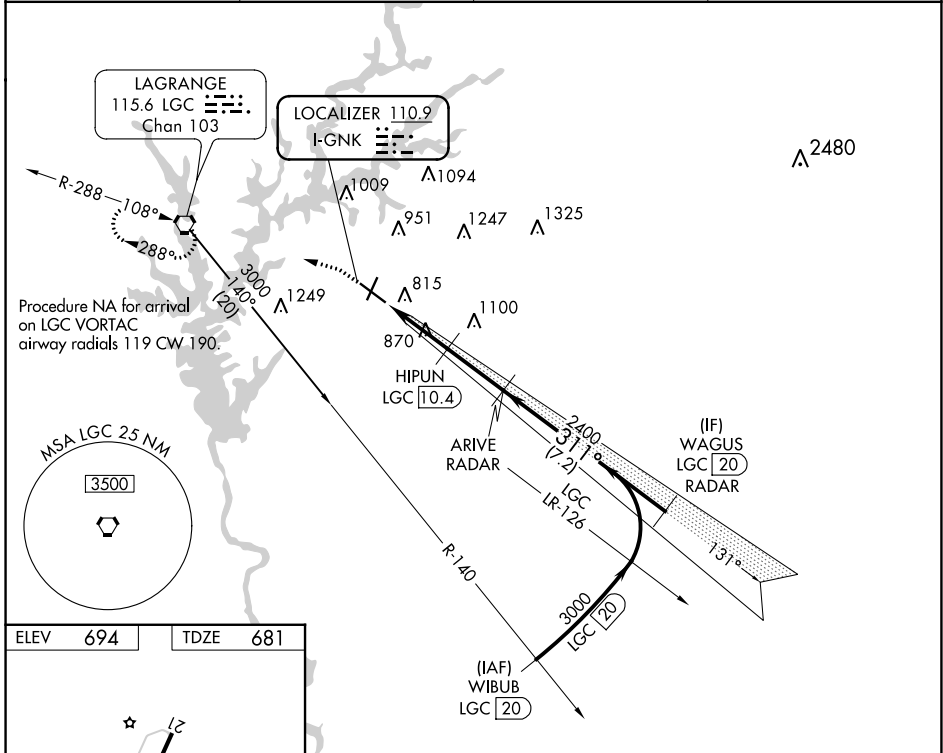
DME required for procedure entry.
RADAR and DME required for LOC only.

MALSR
A5

MISSED APPROACH: Climb to 1200 then climbing left turn to 2400 direct LGC VORTAC and hold.

NA Circling Rwy 13, 21 NA at night. DME from LGC VORTAC.
Simultaneous reception of I-GNKG and LGC DME required.

AWOS-3 126.325	ATLANTA APP CON★ 125.5 323.1	CINC DEL 119.25	UNICOM 122.975 (CTAF) 0
--------------------------	--	---------------------------	--



CATEGORY	A	B	C	D
S-ILS 31	881-1/2		200 (200-1/2)	
S-LOC 31	1120-1/2	439 (500-1/2)	1120-3/4	439 (500-3/4)
C CIRCLING	1280-1	586 (600-1)	1540-2 1/2 846 (900-2 1/2)	1600-3 906 (1000-3)

SE-4, 01 DEC 2022 to 29 DEC 2022

SE-4, 01 DEC 2022 to 29 DEC 2022