

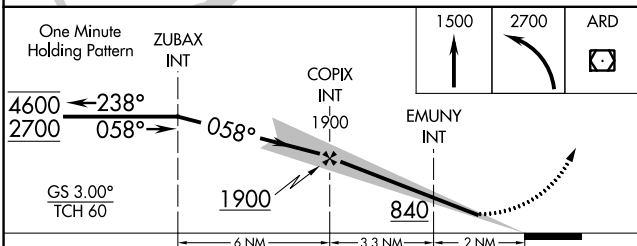
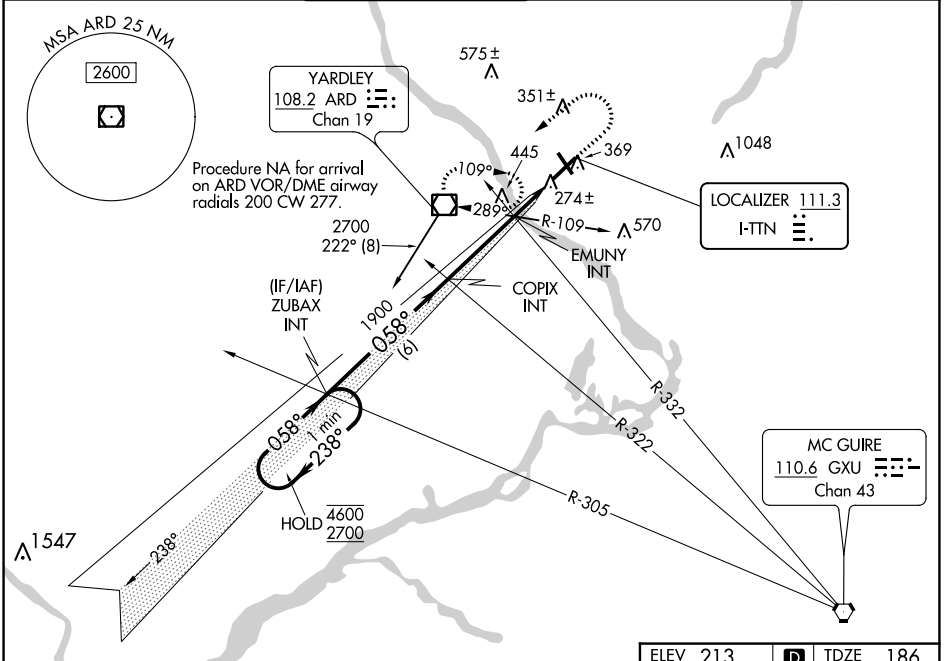
LOC I-TTN 111.3	APP CRS 058°	Rwy Idg TDZE Apt Elev	6006 186 213
---------------------------	------------------------	-----------------------------	---

ILS or LOC RWY 6

TRENTON MERCER (TTN)

<p>▼ When Circling to Rwy 34 at night, operational VGSI required, remain on or above VGSI glidepath until threshold. For inop ALS, increase EMUNY fix minimums S-LOC 6 Cat C/D visibility to 1 SM.</p> <p>▲ MALSR</p>	<p>MISSED APPROACH: Climb to 1500 then climbing left turn to 2700 direct ARD VOR/DME and hold.</p>
---	--

ATIS 126.775	PHILADELPHIA APP CON 123.8 291.7	TRENTON TOWER ★ 120.7 (CTAF) 257.8	GND CON 121.9 257.8	CLNC DEL 121.9 257.8	UNICOM 122.95
------------------------	--	--	-------------------------------	--------------------------------	-------------------------



ELEV 213	D	TDZE 186
----------	----------	----------

6006 x 150

4800 x 150

10.92% UP

TWR 276

058° 5.3 NM from FAF

HIRL Rwy 6-24 and 16-34

REIL Rwy 16, 24 and 34

FAF to MAP 5.3 NM

Knots	60	90	120	150	180
Min:Sec	5:18	3:32	2:39	2:07	1:46

CATEGORY	A	B	C	D
S-ILS 6	414-½ 228 (300-½)			
S-LOC 6	840-½	654 (700-½)	840-1¾	654 (700-1¾)
C CIRCLING	840-1	627 (700-1)	840-1¾	960-2½ 627 (700-1¾) 747 (800-2½)
EMUNY FIX MINIMUMS (DUAL VOR RECEIVERS REQUIRED)				
S-LOC 6	540-½	354 (400-½)	540-5/8	354 (400-5/8)
C CIRCLING	680-1	467 (500-1)	760-1½	960-2½ 547 (600-1½) 747 (800-2½)

NE-2, 01 DEC 2022 to 29 DEC 2022

NE-2, 01 DEC 2022 to 29 DEC 2022