

| | | | |
|--|------------------------|-----------------------------|---|
| WAAS CH 99330 W16A | APP CRS 158° | Rwy Idg TDZE Apt Elev | 4800 213 213 |
|--|------------------------|-----------------------------|---|

RNAV (GPS) RWY 16

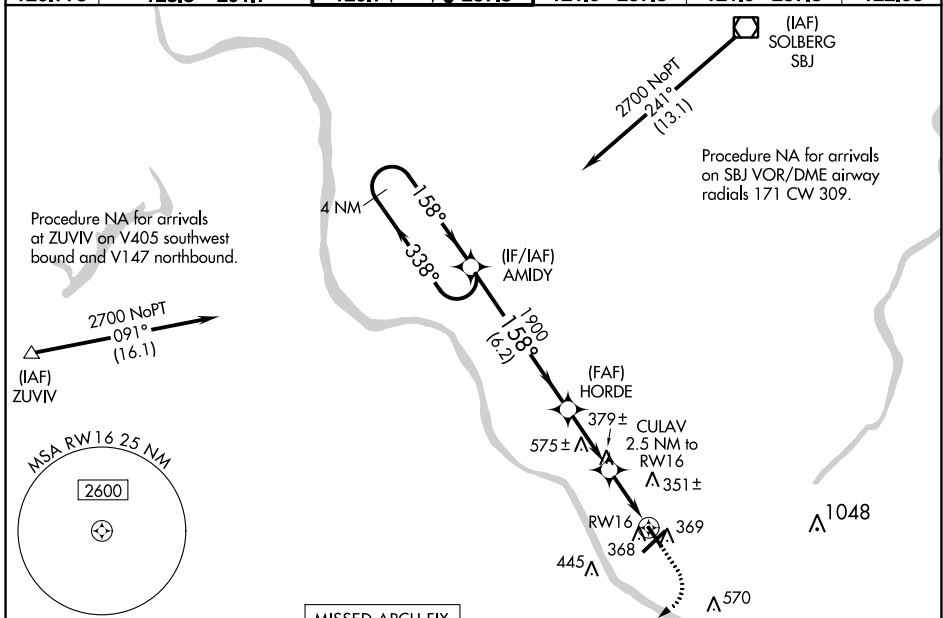
TRENTON MERCER (TTN)

Night Landing: Rwy 34 operational VGSI required, remain on or above VGSI glidepath until threshold. Baro-VNAV NA when using Northeast Philadelphia altimeter setting. For uncompensated Baro-VNAV systems, LNAV/VNAV NA below -1.5°C (5°F) or above 54°C (130°F). DME/DME RNP-0.3 NA.

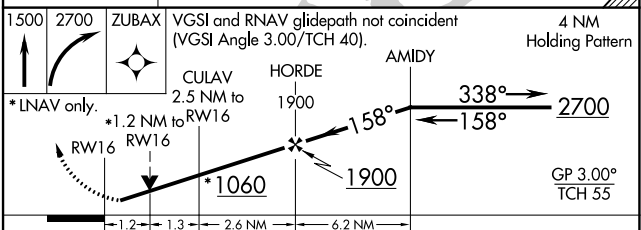
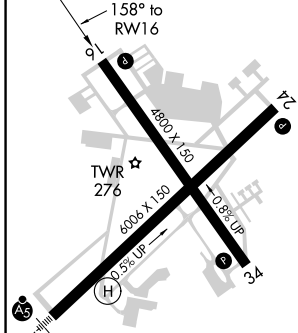
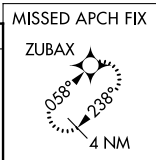
Helicopter visibility reduction below 3/4 SM NA. When local altimeter setting not received use Northeast Philadelphia altimeter setting; increase LPV DA to 510 feet and all Cats visibility: 3/8 SM, LNAV/VNAV DA to 576 feet; increase all MDA 60 feet and LNAV Cat C/D visibility 3/8 SM and Circling Cat C visibility 1/2 SM.

MISSED APPROACH:
Climb to 1500 then climbing right turn to 2700 direct ZUBAX and hold.

| | | | | | |
|------------------------|--|--|-------------------------------|--------------------------------|-------------------------|
| ATIS 126.775 | PHILADELPHIA APP CON 123.8 291.7 | TRENTON TOWER ★ 120.7 (CTAF) 0 257.8 | GND CON 121.9 257.8 | CLNC DEL 121.9 257.8 | UNICOM 122.95 |
|------------------------|--|--|-------------------------------|--------------------------------|-------------------------|



| | | |
|-----------------|----------|-----------------|
| ELEV 213 | D | TDZE 213 |
|-----------------|----------|-----------------|



| | | | | |
|--------------|-----------------------|-------------|-----------------|-----------------|
| CATEGORY | A | B | C | D |
| LPV DA | 463-3/4 250 (300-3/4) | | | |
| LNAV/VNAV DA | 529-1 316 (400-1) | | | |
| LNAV MDA | 640-1 | 427 (500-1) | 640-1 1/4 | 427 (500-1 1/4) |
| CIRCLING | 680-1 467 (500-1) | | 760-1 1/2 | 960-2 1/2 |
| | | | 547 (600-1 1/2) | 747 (800-2 1/2) |

HIRL Rwy 6-24 and 16-34
REIL Rwy 16, 24 and 34

NE-2, 01 DEC 2022 to 29 DEC 2022

NE-2, 01 DEC 2022 to 29 DEC 2022