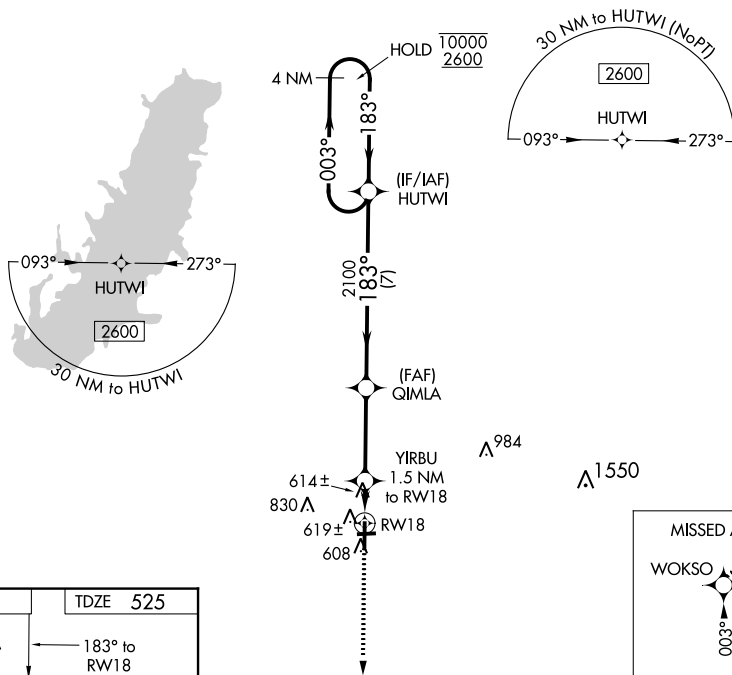


WAAS CH 77728 W18A	APP CRS 183°	Rwy Idg TDZE Apt Elev	5001 525 534
--	------------------------	-----------------------------	---

RNAV (GPS) RWY 18

CENTRALIA MUNI (ENL)

RNP APCH.		MISSED APPROACH: Climb to 2600 direct WOKSO and hold.
<p>▼ Rwy 18 helicopter visibility reduction below 3/4 SM NA. Circling Rwy 9, 27 NA at night.</p>		
AWOS-3 121.125	KANSAS CITY CENTER 127.7 351.825	UNICOM 122.8 (CTAF) 0

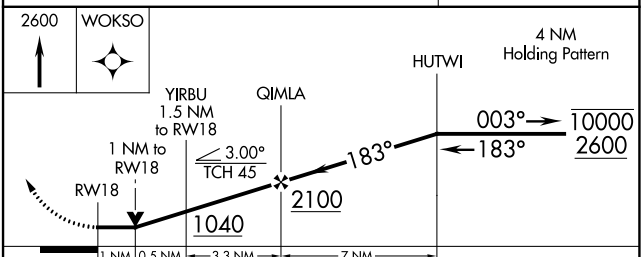


EC-3, 01 DEC 2022 to 29 DEC 2022

EC-3, 01 DEC 2022 to 29 DEC 2022

ELEV 534	TDZE 525
<p>552± Δ 183° to RWY 18</p>	
<p>81 \oplus 0.3% UP</p>	
<p>3300 X 60</p>	
<p>5001 X 75</p>	
<p>36 \oplus</p>	

MIRL Rwy 9-27 and 18-36 **0**
REIL Rwy 18 and 36 **0**



CATEGORY	A	B	C	D
LP MDA	880-1		355 (400-1)	
LNAV MDA	900-1		375 (400-1)	
C CIRCLING	980-1 446 (500-1)	1000-1 466 (500-1)	1180-1 ^{3/4} 646 (700-1 ^{3/4})	1180-2 646 (700-2)