

RNAV (GPS) RWY 27

APCH CRS	Rwy ldg	4814
273°	TDZE	228
	Arprt Elev	244

AL-5069 [USA]

SIMMONS AAF (KFBG)

DME/DME RNP-0.3 NA.

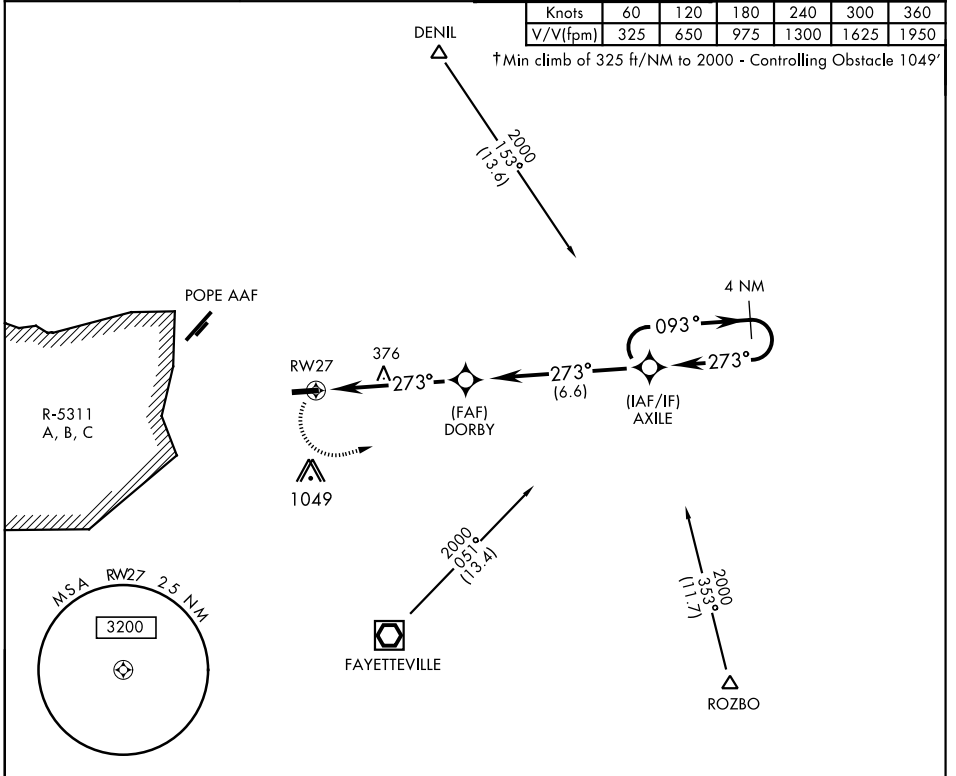
▼ When local altimeter setting not received, use Pope AAF altimeter setting.

† MISSED APPROACH: Climbing left turn to 2100 direct AXILE and hold.

ATIS 139.25	FAYETTEVILLE APP CON 133.0 290.25	SIMMONS TOWER ★ 125.9 240.625	GND CON 121.9 229.4	PAR
-----------------------	---	---	-------------------------------	-----

Knots	60	120	180	240	300	360
V/V(fpm)	325	650	975	1300	1625	1950

† Min climb of 325 ft/NM to 2000 - Controlling Obstacle 1049'



ELEV 244	TDZE 228	2100	AXILE	
Rwy 9 ldg 4306'				
Rwy 27 ldg 4814'				
MIRL Rwy 9-27				
REIL Rwy 27				
CATEGORY	A	B	C	D
LNAV MDA	680-1	452 (500-1)	680-1 $\frac{3}{8}$ 452 (500-1 $\frac{3}{8}$)	NA
CIRCLING	780-1	536 (600-1)	780-1 $\frac{1}{2}$ 536 (600-1 $\frac{1}{2}$)	NA

RNAV (GPS) RWY 27

SE-2, 01 DEC 2022 to 29 DEC 2022

SE-2, 01 DEC 2022 to 29 DEC 2022