

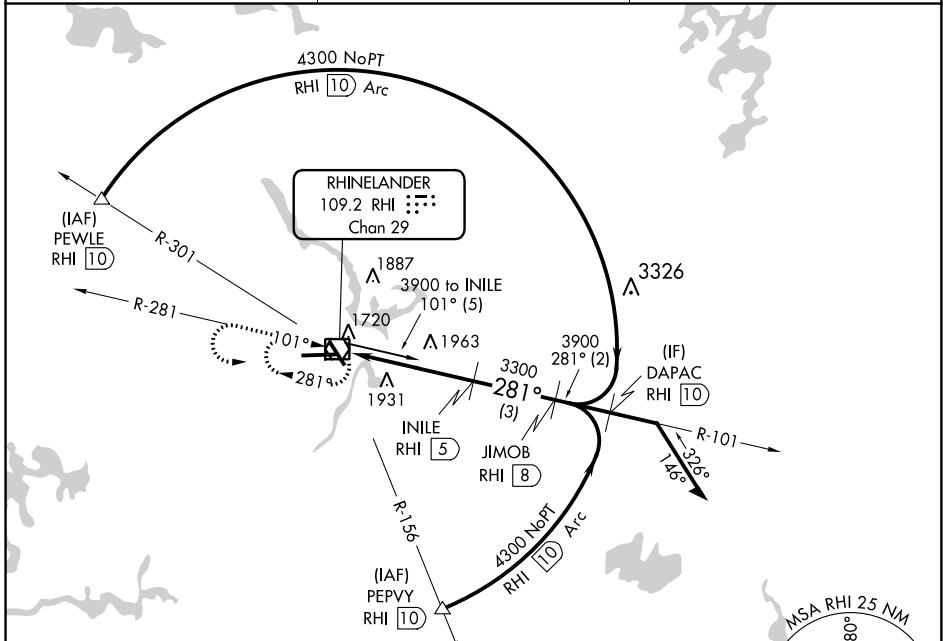
VOR/DME RHI	APP CRS	Rwy Idg	6799
109.2	281°	TDZE	1606
Chan 29		Apt Elev	1624

VOR/DME RWY 27
RHINELANDER/ONEIDA COUNTY (RHI)

When local altimeter setting not received, use Tomhawk altimeter setting and increase all MDA 60 feet and Cat C/D visibility ¼ mile.

MISSED APPROACH: Climb to 3900 then left turn direct RHI VOR/DME and hold.

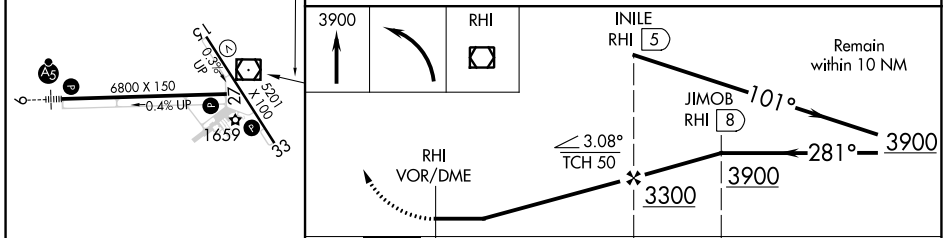
ASOS 126.825	MINNEAPOLIS CENTER 133.65 281.5	UNICOM 123.0 (CTAF)
-----------------	------------------------------------	------------------------



EC-3, 01 DEC 2022 to 29 DEC 2022

EC-3, 01 DEC 2022 to 29 DEC 2022

ELEV 1624	D	TDZE 1606
-----------	---	-----------



CATEGORY	A	B	C	D
S-27	2220-1	614 (600-1)	2220-1¾	614 (600-1¾)
CIRCLING	2220-1	2260-1	2260-1	2280-2
	596 (600-1)	636 (700-1)	636 (700-1¾)	656 (700-2)

RHINELANDER, WISCONSIN
Orig-I 07OCT21

45°38'N-89°28'W

RHINELANDER/ONEIDA COUNTY (RHI)
VOR/DME RWY 27