

WAAS CH 49211	APP CRS 159°	Rwy Idg TDZE 320	8500
W16B		Apt Elev 346	

RNAV (GPS) RWY 16R

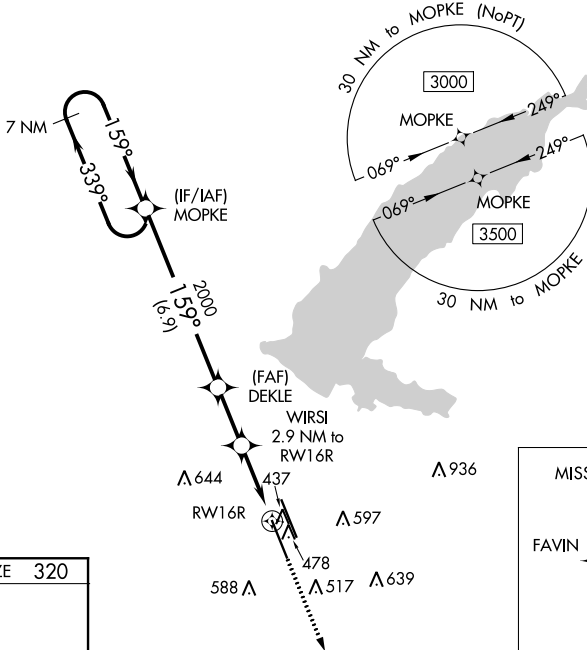
JACKSON-MEDGAR WILEY EVERS INTL (JAN)

RNP APCH.

▽ For uncompensated Baro-VNAV systems, LNAV/VNAV NA below -7°C or above 54°C. Circling NA for Cat E southwest of Rwy 16R-34L. When local altimeter setting not received, use Hawkins Fld altimeter setting and increase all DA 19 feet and all MDA 20 feet, increase LNAV/VNAV all Cats and LNAV Cat C/D/E visibility 1/8 SM. Rwy 16R helicopter visibility reduction below 3/4 SM NA. VDP and Baro-VNAV NA when using Hawkins Fld altimeter setting.

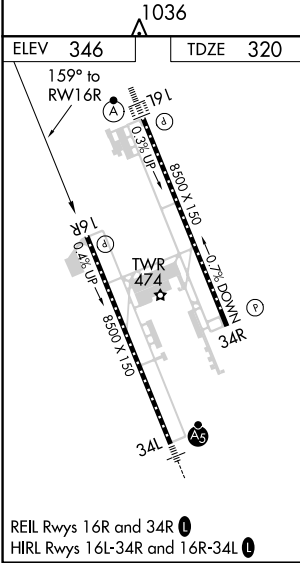
MISSED APPROACH:
Climb to 3000 direct FAVIN and hold.

ATIS 121.05	JACKSON APP CON* 123.9 317.7	JACKSON TOWER* 120.9 (CTAF) 352.0	GND CON 121.7 348.6	UNICOM 122.95
-----------------------	--	---	-------------------------------	-------------------------



SC-4, 01 DEC 2022 to 29 DEC 2022

SC-4, 01 DEC 2022 to 29 DEC 2022



7 NM Holding Pattern MOPKE	3000	339°	159°	159°	2000	WIRSI 2.9 NM to RWY 16R	3000	FAVIN
GP 3.00° TCH 55					*1280	*1.1 NM to RWY 16R		*1.1 NM to RWY 16R
CATEGORY	A	B	C	D	E			
LPV DA		621-1	301 (300-1)					
LNAV/VNAV DA		638-1	318 (300-1)					
LNAV MDA	720-1	400 (400-1)	720-1 1/8	400 (400-1 1/8)				
C CIRCLING	880-1 534 (600-1)	900-1 554 (600-1)	900-1 1/2 554 (600-1 1/2)	960-2 614 (700-2)	1040-2 1/2 694 (700-2 1/2)			