

MHZ VORTAC <b>113.2</b> Chan <b>79</b>	APP CRS <b>171°</b>	Rwy ldg <b>8500</b> TDZE <b>312</b> Apt Elev <b>346</b>
--	------------------------	---

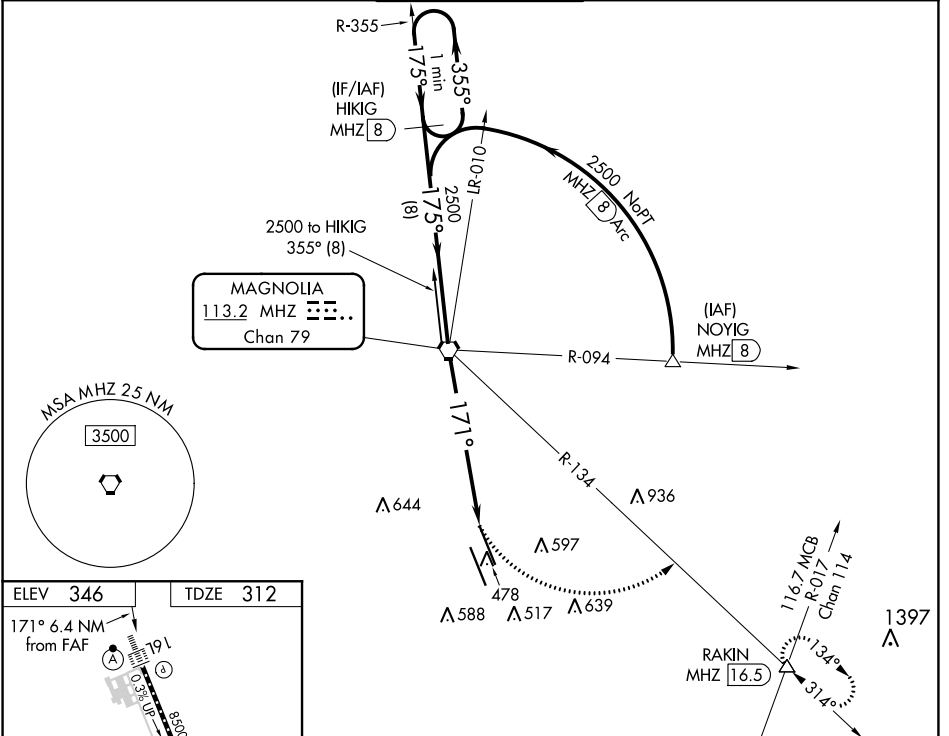
# VOR/DME or TACAN RWY 16L

JACKSON-MEDGAR WILEY EVERS INTL (JAN)

**▽** VDP NA with Hawkins fld altimeter setting. When local altimeter setting not received, use Hawkins fld altimeter setting and increase all MDA 20 feet; increase S-16L Cats C/D/E visibility to 1¼ mile. For inop ALSF, increase S-16L Cats A/B visibility to 1 mile; Cat E to 1½. For inop ALSF when using Hawkins fld altimeter setting, increase S-16L Cats A/B visibility to 1 mile, and Cats C/D/E visibility to 1½. Circling NA for Cat E southwest of Rwy 16R-34L. Helicopter visibility reduction below ¾ SM NA.

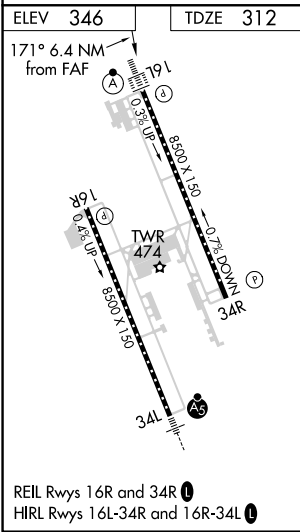
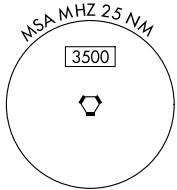
**ALSF-2**  
**△** MISSED APPROACH: Climbing left turn to 3000 on heading 103° and MHZ VORTAC R-134 to RAKIN INT/ MHZ 16.5 DME and hold.

ATIS <b>121.05</b>	JACKSON APP CON * <b>123.9 317.7</b>	JACKSON TOWER * <b>120.9 (CTAF) 352.0</b>	GND CON <b>121.7 348.6</b>	UNICOM <b>122.95</b>
-----------------------	---	--	-------------------------------	-------------------------



SC-4, 01 DEC 2022 to 29 DEC 2022

SC-4, 01 DEC 2022 to 29 DEC 2022



One Minute Holding Pattern	HIKIG MHZ 8	MHZ VORTAC	3000 hdg 103°	MHZ R-134	RAKIN △
2500	175°	2500	171°	MHZ 4.9	MHZ 6.4
8 NM		4.9 NM		1.5	
CATEGORY	A	B	C	D	E
S-16L	860/40	548 (600-¾)	860/60	548 (600-1¼)	
<b>C</b> CIRCLING	880-1 534 (600-1)	900-1 554 (600-1)	900-1½ 554 (600-1½)	960-2 614 (700-2)	1040-2½ 694 (700-2½)