


VOR/DME SWO <b>108.4</b> Chan <b>21</b>	APP CRS <b>178°</b>	Rwy Idg <b>7401</b> TDZE <b>1000</b> Apt Elev <b>1000</b>
---	------------------------	---

# VOR RWY 17

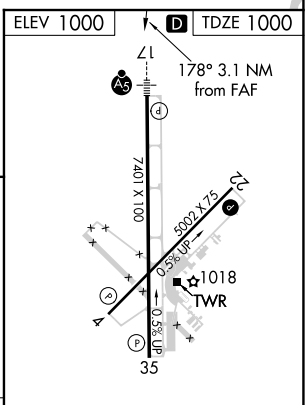
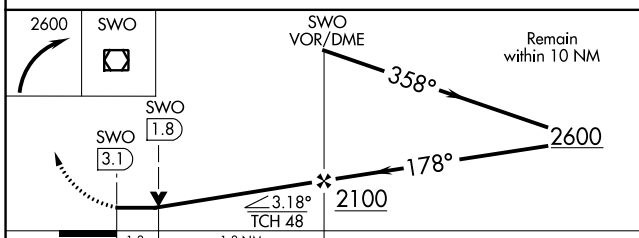
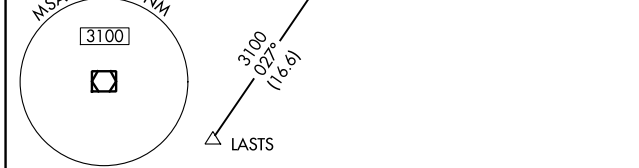
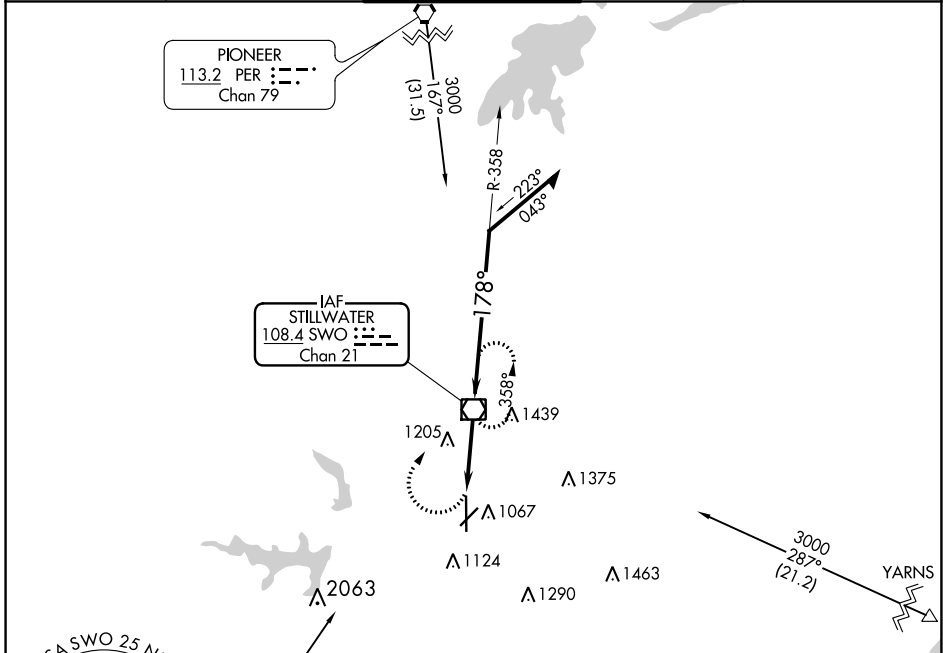
STILLWATER RGNL (SWO)

**⚠** When local altimeter setting not received, use Ponca City Rgnl altimeter setting and increase all MDA 80 feet and Circling Cat D visibility ½ mile. VDP NA with Ponca City altimeter setting. For inop MALSR increase S-17 Cats A/B visibility to 1 mile. Helicopter visibility reduction below ¾ SM NA.

**MALS** 

**MISSED APPROACH:** Climbing right turn to 2600 direct SWO VOR/DME and hold.

ASOS <b>135.725</b>	KANSAS CITY CENTER <b>127.8 319.1</b>	<b>STILLWATER TOWER ★</b> <b>125.35 (CTAF) 0</b>	GND CON <b>121.6</b>	UNICOM <b>122.95</b>
------------------------	--	---	-------------------------	-------------------------



CATEGORY	A	B	C	D
S-17		1460-¾ 460 (500-¾)		1460-1 460 (500-1)
<b>C</b> CIRCLING	1460-1 460 (500-1)		1520-1½ 520 (600-1½)	1740-2¼ 740 (800-2¼)

REIL Rwy 35 **0**

MIRL Rwy 4-22 and 17-35 **0**

FAF to MAP 3.1 NM

Knots	60	90	120	150	180
Min:Sec	3:06	2:04	1:33	1:14	1:02

SC-1, 01 DEC 2022 to 29 DEC 2022

SC-1, 01 DEC 2022 to 29 DEC 2022