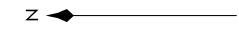
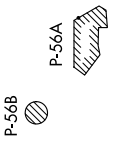


# CLTCH THREE DEPARTURE (RNAV)

NE-3, 01 DEC 2022 to 29 DEC 2022

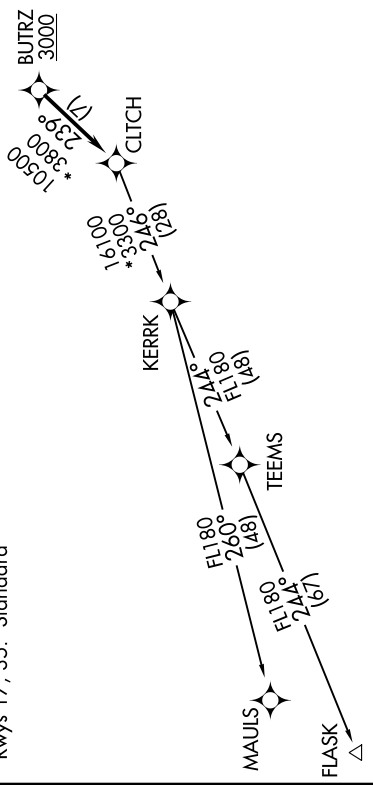
**TOP ALTITUDE:**  
3000



- AWOS-3
- 125.225
- CLNC DEL
- 120.5
- 118.55 (When twr closed)
- GND CON
- 120.5
- LEESBURG TOWER\*
- 127.5 (CTAF)
- UNICOM
- 122.975
- POTOMAC DEP CON
- 125.05 350.2

NOTE: RNAV 1.  
 NOTE: RADAR required.  
 NOTE: DME/DME/IRU or GPS required.  
 NOTE: Turbo-jets only.  
 NOTE: Takeoff Rwy 35 requires a climb to 1200 on heading 353° before proceeding on the ATC assigned heading for obstacle avoidance.

**TAKEOFF MINIMUMS:**  
 Rwy 17, 35: Standard



NOTE: Chart not to scale.

## DEPARTURE ROUTE DESCRIPTION

Climb on heading assigned by ATC, expect RADAR vectors to BUTRZ, then on track 239° to CLTCH, thence . . . .  
 . . . . on assigned transition, maintain altitude assigned by ATC, expect clearance to filed altitude within ten (10) minutes after departure.  
**FLASK TRANSITION (CLTCH3:FLASK)**  
**MAULS TRANSITION (CLTCH3:MAULS)**

# CLTCH THREE DEPARTURE (RNAV)

(CLTCH3.CLTCH) 31DEC20

NE-3, 01 DEC 2022 to 29 DEC 2022