

VOR/DME SYI 113.55 Chan 82 (Y)	APP CRS 016°	Rwy Idg 5503 TDZE 801 Apt Elev 801
--	------------------------	---

VOR RWY 36

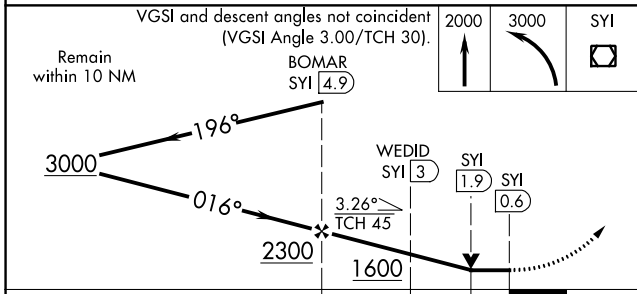
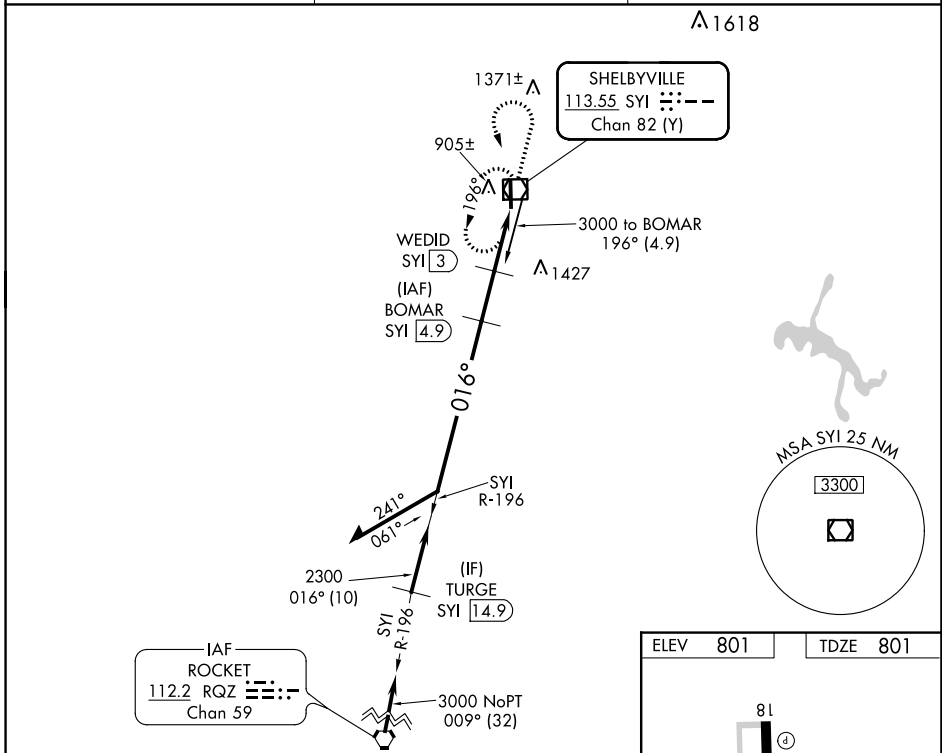
BOMAR FLD/SHELBYVILLE MUNI (SYI)

DME required.

▼ When local altimeter setting not received, use Tullahoma altimeter setting and increase all MDA's 80 feet, and S-36 Cat C/D visibility ¼ SM.
 ▲ VDP NA when using Tullahoma altimeter setting.

MISSED APPROACH: Climb to 2000 then climbing left turn to 3000 direct SYI VOR/DME and hold.

AWOS-3 119.275	MEMPHIS CENTER 128.15 323.125	UNICOM 122.8 (CTAF) 0
--------------------------	---	--



ELEV 801	TDZE 801
----------	----------

Profile view details: Shows the runway profile with a 5503x100 ft runway. A 81ft height is marked. The approach is 016° 4.2 NM from FAF. A 360-degree bearing of 016° is indicated. A 360-degree bearing of 016° is indicated. A 360-degree bearing of 016° is indicated.

60	90	120	150	180
4:12	2:48	2:06	1:41	1:24

CATEGORY	A	B	C	D
S-36	1220-1	419 (500-1)	1220-1½	419 (500-1½)
☐ CIRCLING	1260-1 459 (500-1)	1420-1 619 (700-1)	1780-3	979 (1000-3)

SE-1, 01 DEC 2022 to 29 DEC 2022

SE-1, 01 DEC 2022 to 29 DEC 2022