

LOC I-DQH <b>108.7</b>	APP CRS <b>043°</b>	Rwy Idg 6000 TDZE 253 Apt Elev 257
---------------------------	------------------------	---

# ILS or LOC RWY 4

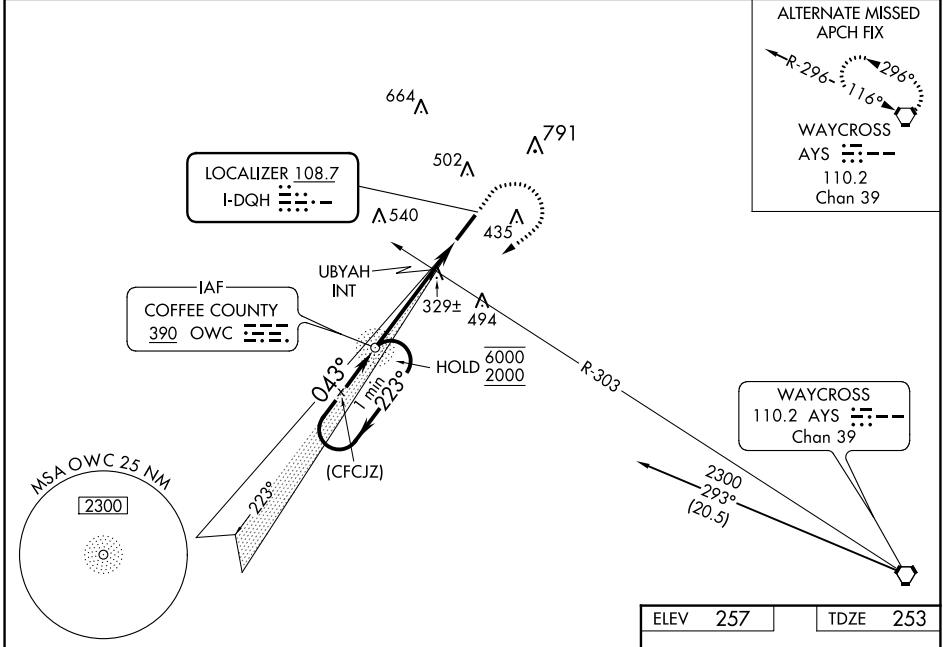
DOUGLAS MUNI (DQH)

ADF required.

**MALS**  
 MISSED APPROACH: Climb to 900 then climbing right turn to 2000 direct OWC NDB and hold.

**▽** For inop MALS, increase S-LOC 4 Cat C and D visibility to 1 3/8 mile.  
**▲**

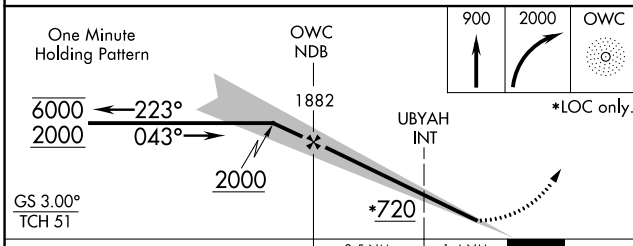
AWOS-3 <b>119,075</b>	JACKSONVILLE CENTER <b>127,575 269,025</b>	UNICOM <b>122.8 (CTAF) 0</b>
--------------------------	---	---------------------------------



ALTERNATE MISSED APCH FIX

WAYCROSS  
 AYS ---  
 110.2  
 Chan 39

WAYCROSS  
 110.2 AYS ---  
 Chan 39



ELEV 257	TDZE 253
----------	----------

MIRL Rwy 4-22 0

6000 x 100

043° 4.9 NM from FAF

FAF to MAP 4.9 NM	
Knots	60 90 120 150 180
Min:Sec	4:54 3:16 2:27 1:58 1:38

CATEGORY	A	B	C	D
S-ILS 4		453-1/2	200 (200-1/2)	
S-LOC 4	720-1/2	467 (500-1/2)	720-1	467 (500-1)
<b>C</b> CIRCLING	720-1 463 (500-1)	820-1 563 (600-1)	960-2 703 (800-2)	1160-3 903 (1000-3)
UBYAH FIX MINIMUMS (DUAL VOR RECEIVERS REQUIRED)				
S-LOC 4		580-1/2	327 (400-1/2)	
<b>C</b> CIRCLING	720-1 463 (500-1)	820-1 563 (600-1)	960-2 703 (800-2)	1160-3 903 (1000-3)

SE-4, 01 DEC 2022 to 29 DEC 2022

SE-4, 01 DEC 2022 to 29 DEC 2022