


LOC I-SQK <b>108.35</b>	APP CRS <b>185°</b>	Rwy Idg TDZE Apt Elev	<b>6503</b> <b>866</b> <b>866</b>
----------------------------	------------------------	-----------------------------	---

# ILS or LOC RWY 18

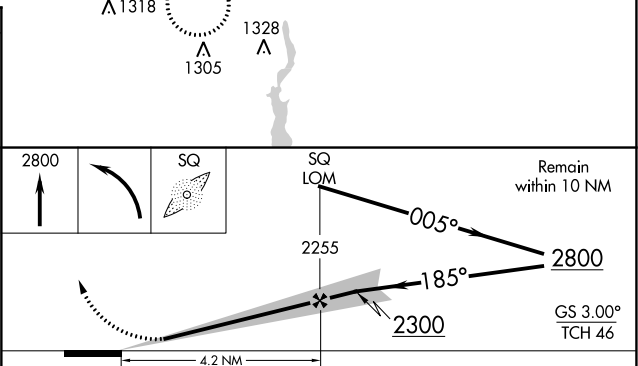
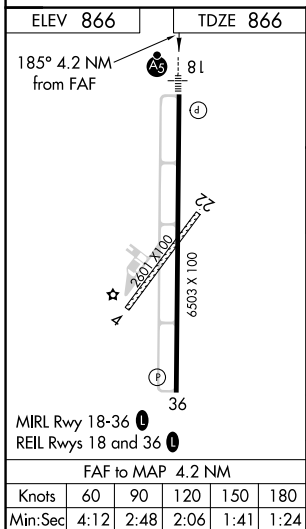
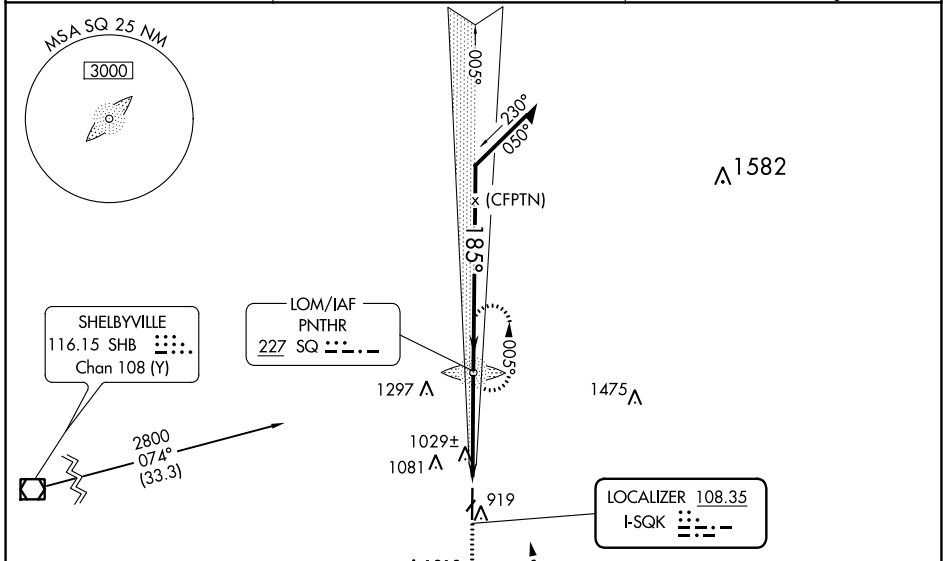
METTEL FLD (CEV)


ADF required.

**NA** Circling NA to Rwys 4 and 22. For inop MALS, increase S-LOC 18 Cats C/D visibility to 1½ mile. When local altimeter setting not received, use James M Cox Dayton Intl altimeter setting and increase ILS DA to 1237 feet and visibility all Cats to ¾ mile, increase all MDA 140 feet and LOC Cats C/D visibility to 1½ mile, and Circling Cat B visibility to 1¼ miles and Cat C to 2¾ miles and Cat D to 3 miles. When using James M Cox Dayton Intl altimeter setting: for inop MALS, increase S-ILS 18 all Cats visibility to 1 mile and increase S-LOC 18 Cat A/B visibility to 1 mile and Cat C/D to 1½ mile.

**MALS**  MISSED APPROACH: Climb to 2800 then left turn direct SQ LOM and hold.

AWOS-3 <b>118.325</b>	COLUMBUS APP CON <b>118.425 352.05</b>	UNICOM <b>122.8 (CTAF)</b> 
--------------------------	---	---



CATEGORY	A	B	C	D
S-ILS 18	1116-½		250 (300-½)	
S-LOC 18	1280-½	414 (500-½)	1280-¾	414 (500-¾)
 CIRCLING	1440-1 574 (600-1)	1540-1 674 (700-1)	1620-2¼ 754 (800-2¼)	1620-2½ 754 (800-2½)