

WAAS CH 93699 W18A	APP CRS 185°	Rwy Idg TDZE Apt Elev	6503 866 866
--	------------------------	-----------------------------	---

RNAV (GPS) RWY 18

METTEL FLD (CEV)

RNP APCH.

NA For uncompensated Baro-VNAV systems, LNAV/VNAV NA below -16°C or above 54°C. VDP and Baro-VNAV NA when using James M. Cox Dayton Intl altimeter setting. Circling Rwy 4, 22 NA at night. For inop ALS increase LPV all Cats visibility to 1 SM, LNAV/VNAV all Cats visibility to 1½ SM, and LNAV Cats A/B visibility to 1 SM. For inop ALS when using James M. Cox Dayton Intl altimeter setting, increase LPV all Cats visibility to 1 SM, LNAV/VNAV all Cats visibility to 1½ SM. When local altimeter setting not received, use James M. Cox Dayton Intl altimeter setting and increase all DA 121 feet and all MDA 140 feet: increase LPV and LNAV/VNAV all Cats and LNAV Cat C/D visibility ¾ SM, and Circling Cat C/D visibility ½ SM.

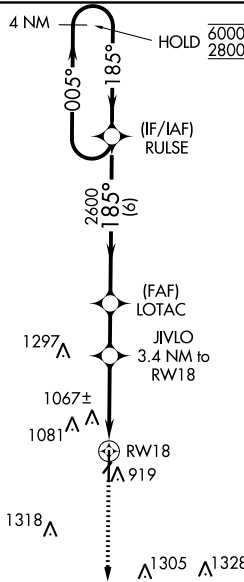
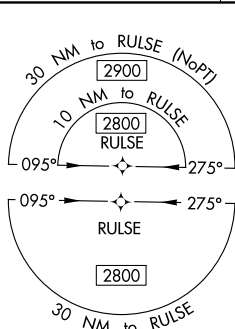


MISSED APPROACH:
Climb to 2800 direct
WALAG and hold.

AWOS-3
118.325

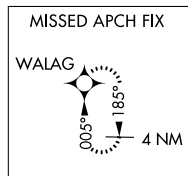
COLUMBUS APP CON
118.425 352.05

UNICOM
122.8 (CTAF)

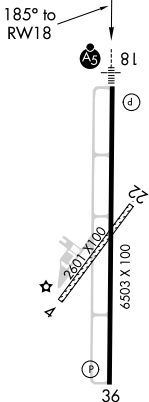


△1582

△1475



ELEV	866	TDZE	866
------	-----	------	-----



REIL Rws 18 and 36
MIRL Rwy 18-36

2800	WALAG	LOTAC	RULSE	4 NM Holding Pattern
*LNAV only	RW18	JVLO	2600	GP 3.00° TCH 46
*1.3 NM to RW18	3.4 NM to RW18	2600	185°	6000
1.3 NM	2.1 NM	1.9 NM	005°	2800
			2600	
			6 NM	
CATEGORY	A	B	C	D
LPV DA		1116-½	250 (300-½)	
LNAV/VNAV DA		1385-1	519 (600-1)	
LNAV MDA	1320-½	454 (500-½)	1320-⅞	454 (500-⅞)
CIRCLING	1440-1 574 (600-1)	1540-1 674 (700-1)	1620-2¼ 754 (800-2¼)	1620-2½ 754 (800-2½)