

WAAS CH 93929 W36A	APP CRS 005°	Rwy Idg TDZE Apt Elev	6503 862 866
--	------------------------	-----------------------------	---

RNAV (GPS) RWY 36

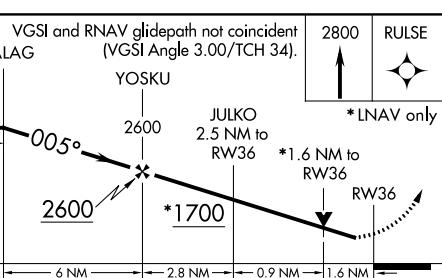
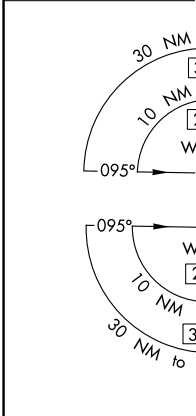
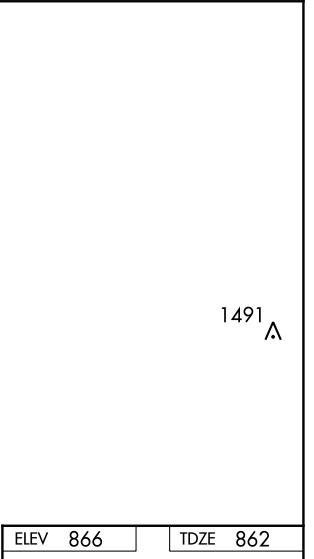
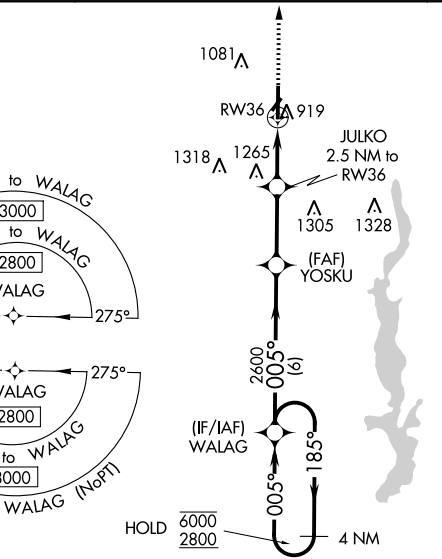
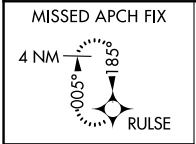
METTEL FLD (CEV)

RNP APCH.

NA For uncompensated Baro-VNAV systems, LNAV/VNAV NA below -16°C or above 54°C. VDP and Baro VNAV NA when using James M. Cox Dayton Intl altimeter setting. Rwy 36 helicopter visibility reduction below 3/4 SM NA. Circling Rwy 4, 22 NA at night. When local altimeter setting not received, use James M Cox Dayton Intl altimeter setting and increase LPV DA to 1253 feet and visibility all Cats to 1 1/8 SM, LNAV/VNAV DA to 1472 feet and visibility all Cats to 1 1/4 SM, increase all MDA 140 feet and LNAV Cats C/D visibility to 1 1/8 SM, Circling Cat B to 1 1/4 SM, Cat C to 2 1/4 SM, and Cat D to 3 SM.

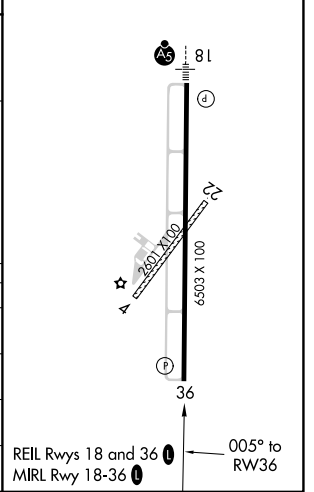
MISSED APPROACH: Climb to 2800 direct RULSE and hold.

AWOS-3 118.325	COLUMBUS APP CON 118.425 352.05	UNICOM 122.8 (CTAF) 0
--------------------------	---	---------------------------------



ELEV 866	TDZE 862
----------	----------

CATEGORY	A	B	C	D
LPV DA		1132-7/8	270 (300-7/8)	
LNAV/VNAV DA		1351-1 1/8	489 (500-1 1/8)	
LNAV MDA	1400-1	538 (600-1)	1400-1 1/2	538 (600-1 1/2)
CIRCLING	1440-1 574 (600-1)	1540-1 674 (700-1)	1620-2 1/4 754 (800-2 1/4)	1620-2 1/2 754 (800-2 1/2)



EC-2, 01 DEC 2022 to 29 DEC 2022

EC-2, 01 DEC 2022 to 29 DEC 2022