

# RNAV (GPS) RWY 28

PRINCETON (39N)

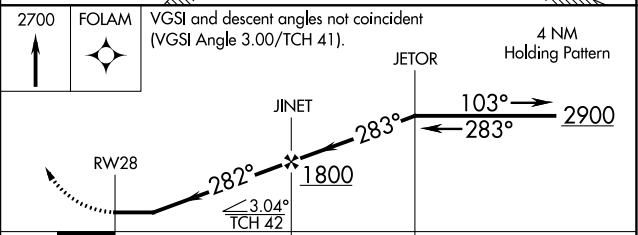
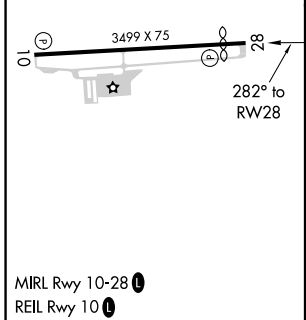
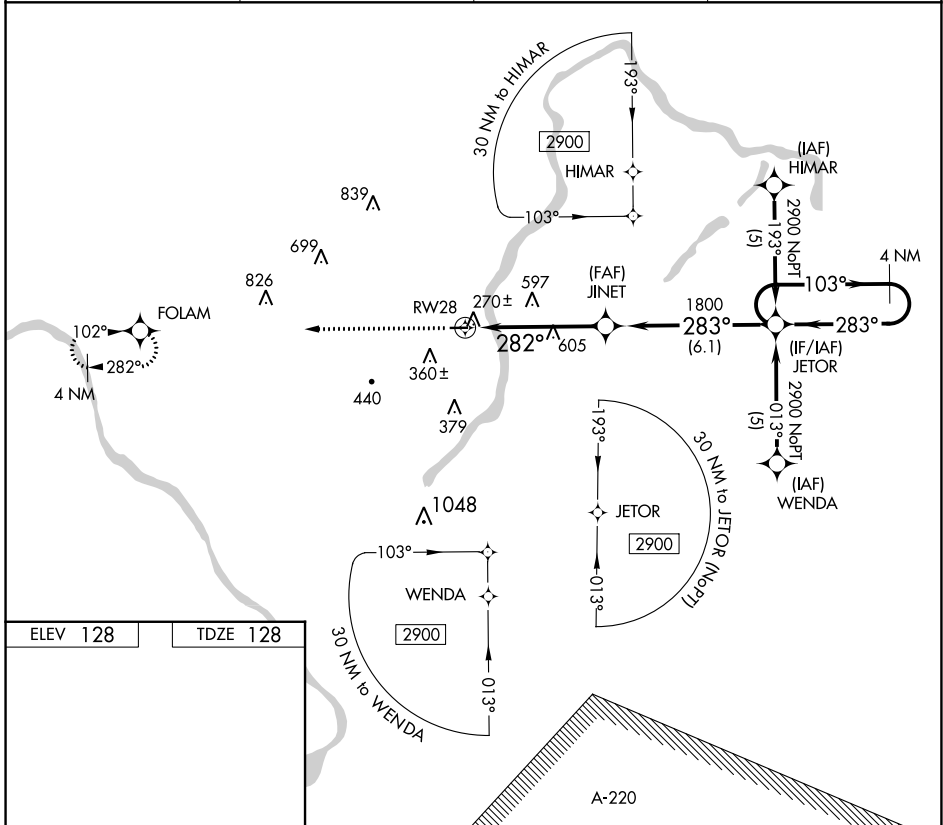
APP CRS <b>282°</b>	Rwy Idg TDZE Apt Elev	<b>3130</b> <b>128</b> <b>128</b>
------------------------	-----------------------------	---

RNP APCH.

**▼** Use Trenton Mercer altimeter setting, if not received use Somerset altimeter setting. Procedure NA at night. Rwy 28 helicopter visibility reduction below 1 SM NA.

**▲NA** MISSED APPROACH: Climb to 2700 direct FOLAM and hold.

TTN ASOS <b>126.775</b>	NEW YORK APP CON <b>132.8 379.9</b>	UNICOM <b>122.725</b> (CTAF)	<b>123.05</b> <b>0</b>
----------------------------	--	---------------------------------	------------------------



CATEGORY	A	B	C	D
LNAV MDA	900-1 772 (800-1)	900-1¼ 772 (800-1¼)	900-2¼ 772 (800-2¼)	NA

NE-2, 01 DEC 2022 to 29 DEC 2022

NE-2, 01 DEC 2022 to 29 DEC 2022