

APP CRS	Rwy Idg	4401
092°	TDZE	796
	Apt Elev	796

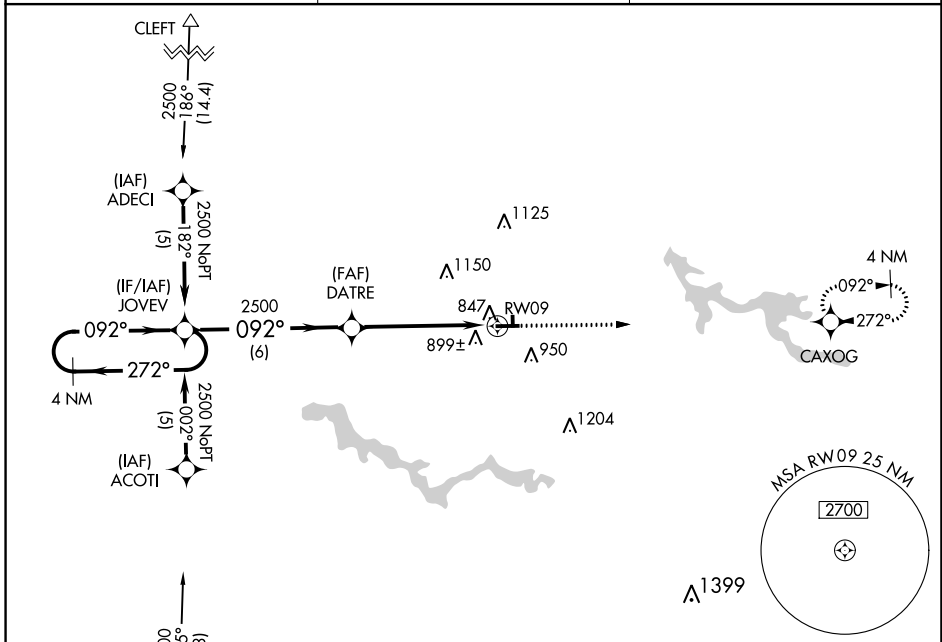
RNAV (GPS) RWY 9

WABASH MUNI (IWH)

NA DME/DME RNP-0.3 NA. Night landing: Rwy 18, 36 NA. Helicopter visibility reduction below 1 SM NA. Use Kokomo altimeter setting; when not received, use Marion altimeter setting.

MISSED APPROACH:
Climb to 2500 direct CAXOG WP and hold.

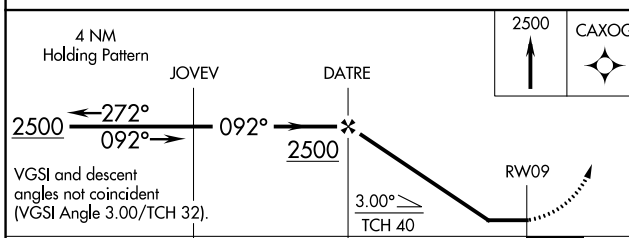
OKK AWOS-3PT 128.675	GRISSOM APP CON ★ 121.05 338.275	UNICOM 122.8 (CTAF) 0
--------------------------------	--	---------------------------------



EC-2, 01 DEC 2022 to 29 DEC 2022

EC-2, 01 DEC 2022 to 29 DEC 2022

Procedure NA for arrival at OKK VORTAC on V285 southbound, and arrival on V96 southwestbound.



ELEV 796	TDZE 796
----------	----------

Profile view: 2500 → 81 (81) → 4401 x 75 → 1940 x 60 → 36 → 27. Angle: 092° to RWY 09.

CATEGORY	A	B	C	D
LNVA MDA	1220-1	424 (500-1)	1220-1¼ 424 (500-1¼)	NA
CIRCLING	1300-1 504 (600-1)	1440-1 644 (700-1)	1560-2¼ 764 (800-2¼)	NA

IURL Rwy 18-36
MIRL Rwy 9-27 0
REIL Rws 9 and 27 0