

| | | | |
|--|------------------------|---|-------------|
| WAAS CH 40336 W04A | APP CRS 043° | Rwy Idg TDZE 92 Apt Elev 92 | 4504 |
|--|------------------------|---|-------------|

RNAV (GPS) RWY 4

MARION COUNTY (MAO)

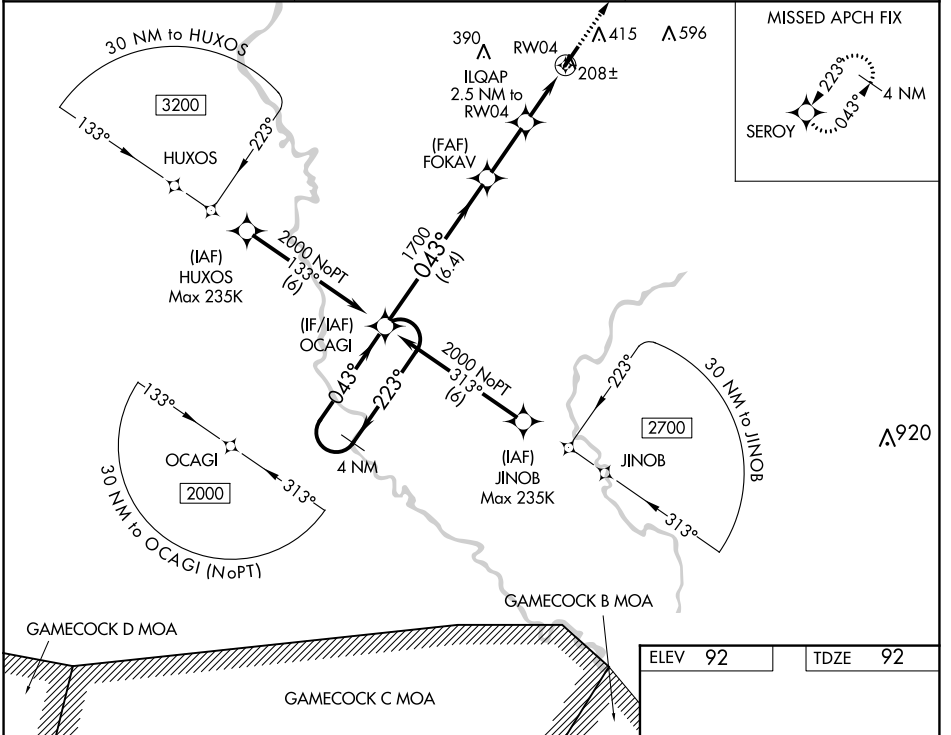
Baro-VNAV NA when using Florence altimeter setting. For uncompensated Baro-VNAV systems, LNAV/VNAV NA below -8°C (18°F) or above 54°C (130°F). DME/DME RNP-0.3 NA. Helicopter visibility reduction below 3/4 SM NA. When local altimeter setting not received, use Florence altimeter setting and increase all DA 53 feet and all visibilities 1/8 mile, increase all MDA 60 feet and all Cat C/D visibilities 1/4 mile.

MISSED APPROACH: Climb to 2000 direct SEROY and hold.

AWOS-3
119.875

FLORENCE APP CON ★
135.25 316.15

UNICOM
122.8 (CTAF)



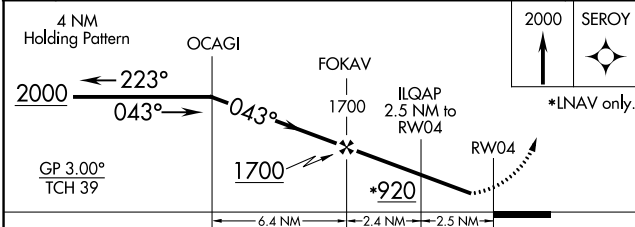
MISSED APCH FIX



SE-2, 01 DEC 2022 to 29 DEC 2022

SE-2, 01 DEC 2022 to 29 DEC 2022

| | |
|----------------|----------------|
| ELEV 92 | TDZE 92 |
|----------------|----------------|



| CATEGORY | A | B | C | D |
|--------------|---------|---------------|------------------------------|------------------------------|
| LPV DA | 342-7/8 | 250 (300-7/8) | 342-1 | 250 (300-1) |
| LNAV/VNAV DA | 369-7/8 | 277 (300-7/8) | 369-1 | 277 (300-1) |
| LNAV MDA | 460-1 | | 368 (400-1) | |
| CIRCLING | 720-1 | 628 (700-1) | 720-1 3/4 628 (700-1 3/4) | 960-2 3/4 868 (900-2 3/4) |

