

WAAS CH <b>50137</b> <b>W25A</b>	APP CRS <b>254°</b>	Rwy Idg TDZE Apt Elev	<b>6197</b> <b>394</b> <b>397</b>
--	------------------------	-----------------------------	---

# RNAV (GPS) RWY 25

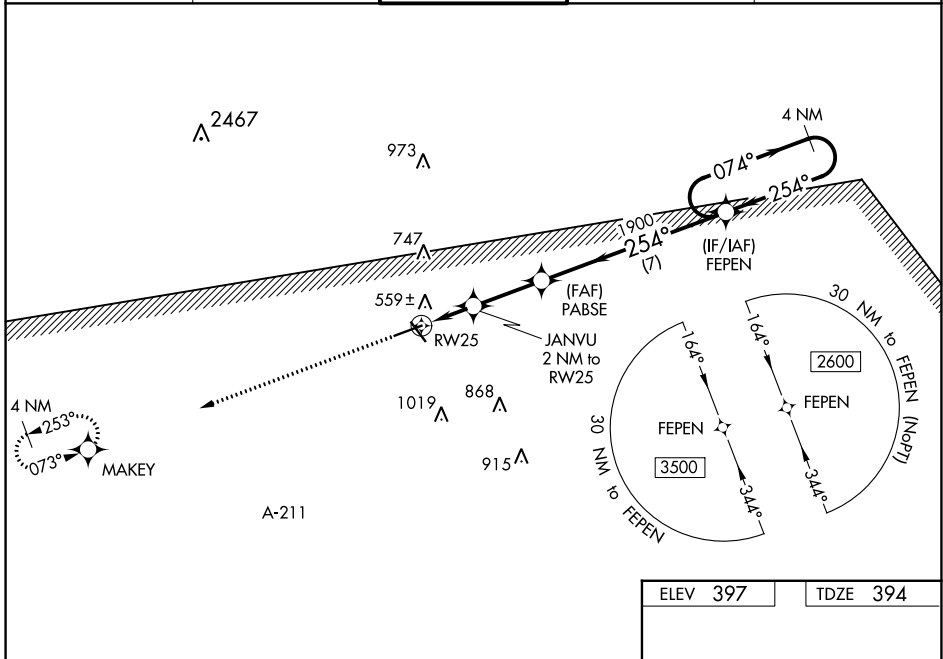
TROY MUNI AT N KENNETH CAMPBELL FLD (TOI)

RNP APCH.

**ASR/PAR** For uncompensated Baro-VNAV systems, LNAV/VNAV NA below -7°C (20°F) or above 54°C (130°F). Baro-VNAV and VDP NA when using Montgomery Rgnl (Dannelly Fld) altimeter setting. Rwy 25 helicopter visibility reduction below ¼ SM NA. Circling to Rwy 14, 32 NA at night. When local altimeter setting not received, use Montgomery Rgnl (Dannelly Fld) altimeter setting and increase LPV DA to 747 and all visibilities ¼ SM, LNAV/VNAV DA to 840 and visibilities ⅓ SM, and all MDA 100 feet; increase LNAV Cats C and D and Circling Cat C visibility ¼ SM.

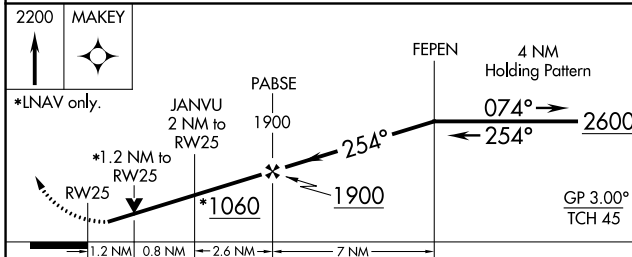
**MISSED APPROACH:**  
Climb to 2200 direct  
MAKEY and hold.

ATIS <b>120.925</b>	CAIRNS APP CON ★ <b>121.1 319.25</b>	TROY TOWER ★ <b>124.3 (CTAF) 0 306.9</b>	GND CON <b>121.9 294.7</b>	UNICOM <b>122.8</b>
------------------------	---	---	-------------------------------	------------------------



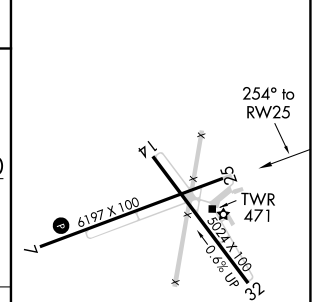
SE-4, 01 DEC 2022 to 29 DEC 2022

SE-4, 01 DEC 2022 to 29 DEC 2022



ELEV 397	TDZE 394
----------	----------

2200	MAKEY
*LNAV only.	
JANVU 2 NM to RW25	PABSE 1900
*1.2 NM to RW25	*1060
1.2 NM	0.8 NM
2.6 NM	7 NM
254°	254°
254°	074°
2600	2600
GP 3.00°	TCH 45
4 NM	4 NM
Holding Pattern	Holding Pattern
FEPEN	FEPEN
4 NM	4 NM
Holding Pattern	Holding Pattern
254° to RW25	254° to RW25



# RNAV (GPS) RWY 25