

LOC I-BZQ <b>111.5</b>	APP CRS <b>320°</b>	Rwy Idg TDZE Apt Elev	<b>5701</b> <b>179</b> <b>187</b>
---------------------------	------------------------	-----------------------------	---

# ILS or LOC RWY 32

STATESBORO-BULLOCH COUNTY (TBR)

**⚠** Inop table does not apply to S-ILS 32. ADF required. When local altimeter setting not received, use Sylvania altimeter setting and increase all DA 28 feet and increase all MDA 40 feet, increase Circling Cat C visibility 1/4 mile. Helicopter visibility reduction below 3/4 SM NA.

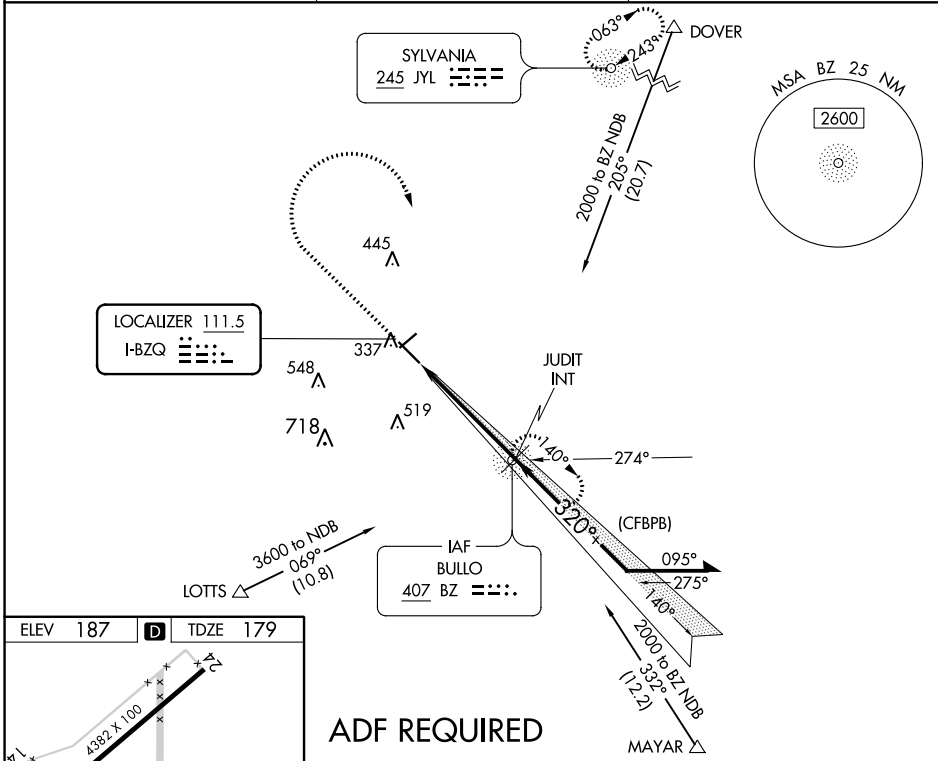


**MISSED APPROACH:** Climb to 800 then climbing right turn to 2000 direct BULLO NDB and hold.

AWOS-3  
**119.025**

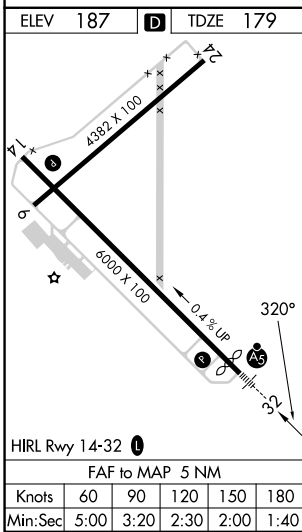
SAVANNAH APP CON ★  
**118.4 354.0**

UNICOM  
**122.725 (CTAF) 0**

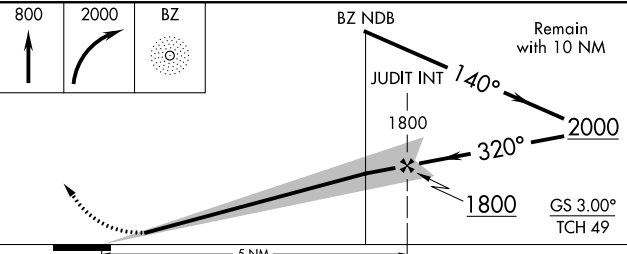


SE-4, 01 DEC 2022 to 29 DEC 2022

SE-4, 01 DEC 2022 to 29 DEC 2022



## ADF REQUIRED



CATEGORY	A	B	C	D
S-ILS 32	433-3/4 254 (300-3/4)			
S-LOC 32	640-3/4	461 (500-3/4)	640-1	461 (500-1)
<b>C</b> CIRCLING	640-1 453 (500-1)	840-1 653 (700-1)	840-1 3/4 653 (700-1 3/4)	860-2 1/4 673 (700-2 1/4)