

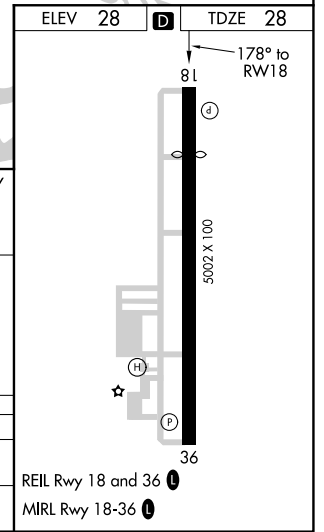
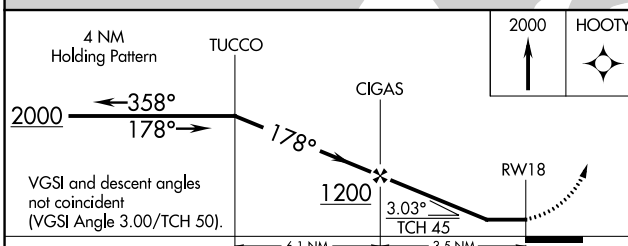
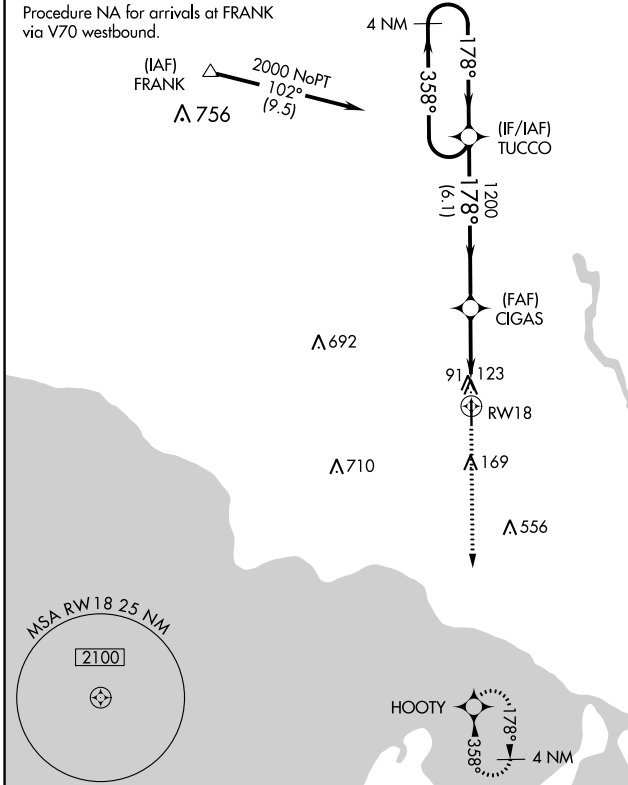
APP CRS	Rwy Idg	4058
178°	TDZE	28
	Apt Elev	28

RNAV (GPS) RWY 18

SLIDELL (ASD)

RNP APCH.		MISSED APPROACH: Climb to 2000 direct HOOTY and hold.
NA Helicopter visibility reduction below 1 SM NA.		

ASOS 132.475	NEW ORLEANS APP CON 133.15 290.3	UNICOM 122.8 (CTAF) 0	GCO 135.075
------------------------	--	---------------------------------	-----------------------



CATEGORY	A	B	C	D
LNVA MDA	400-1 372 (400-1)			NA
CIRCLING	480-1	452 (500-1)	580-1½ 552 (600-1½)	NA

SC-4, 01 DEC 2022 to 29 DEC 2022

SC-4, 01 DEC 2022 to 29 DEC 2022