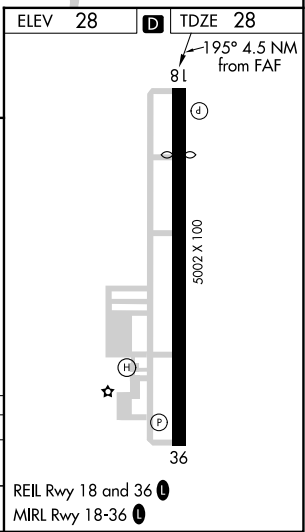
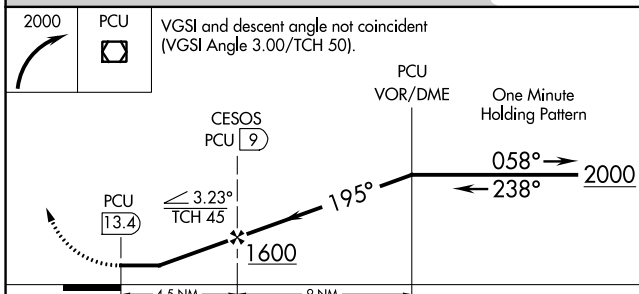
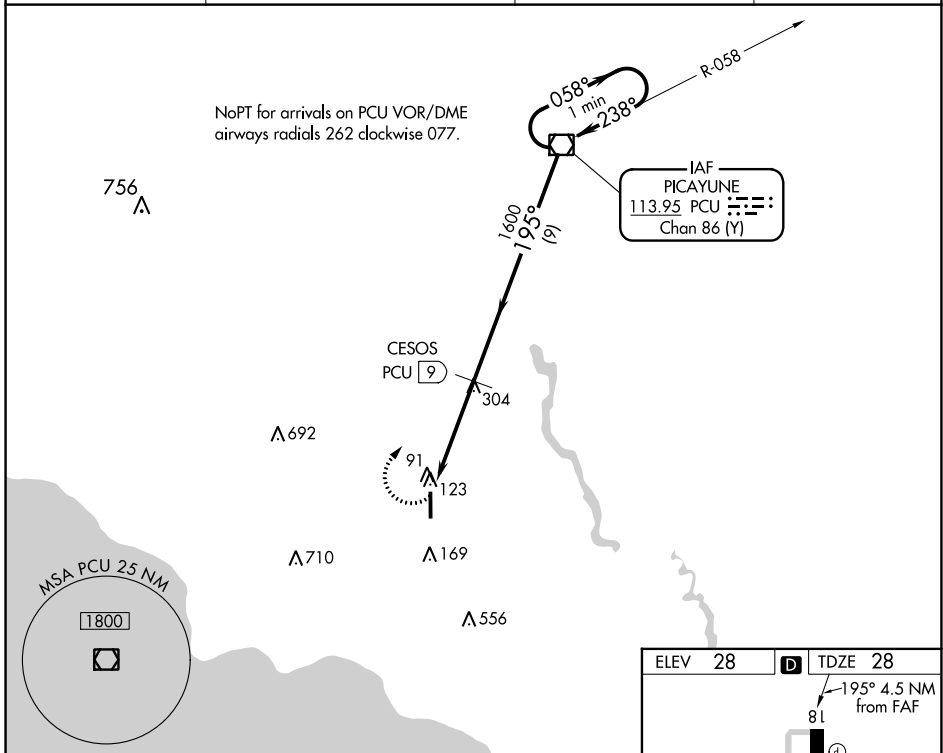


VOR/DME PCU 113.95 Chan 86 (Y)	APP CRS 195°	Rwy Idg 4058 TDZE 28 Apt Elev 28
--	------------------------	---

VOR/DME RWY 18

SLIDELL (ASD)

<p>▼ Night landing Rwy 18 NA. ▲ NA Helicopter visibility reduction below 1 SM NA.</p>		<p>MISSED APPROACH: Climbing right turn to 2000 direct PCU VOR/DME and hold.</p>	
ASOS 132.475	NEW ORLEANS APP CON 133.15 290.3	UNICOM 122.8 (CTAF) 0	GCO 135.075



CATEGORY	A	B	C	D
S-18	460-1	432 (500-1)	460-1½ 432 (500-1½)	NA
CIRCLING	480-1	452 (500-1)	580-1½ 552 (600-1½)	NA

SC-4, 01 DEC 2022 to 29 DEC 2022

SC-4, 01 DEC 2022 to 29 DEC 2022