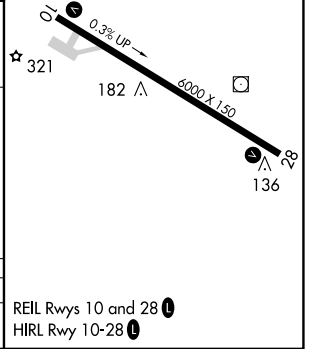
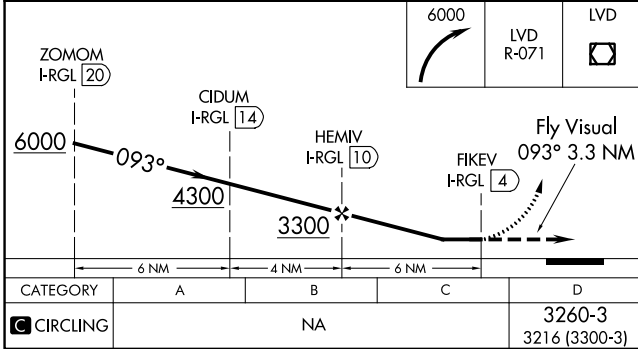
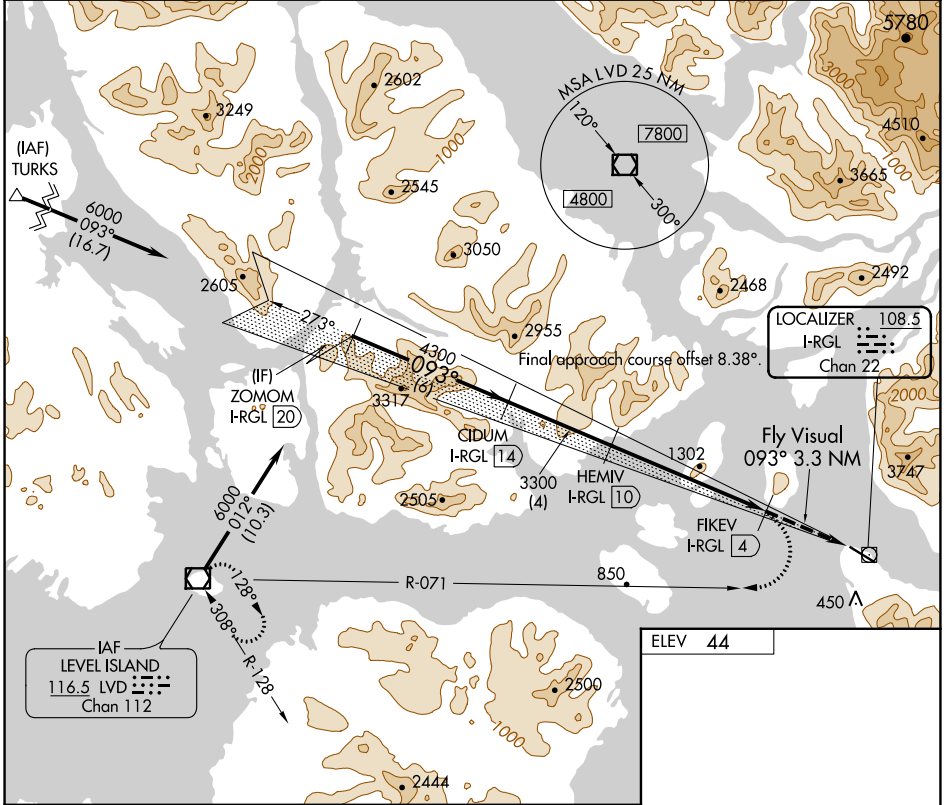


LOC/DME I-RGL <b>108.5</b> Chan <b>22</b>	APP CRS <b>093°</b>	Rwy Idg TDZE Apt Elev <b>N/A</b> <b>N/A</b> <b>44</b>
---	------------------------	--

**LDA-D**  
WRANGELL (WRG) (PAWG)

<p>Circling NA north of Rwy 10-28. DME Required. Any go-around commenced after passing the MAP will not provide standard obstacle clearance.</p>	<p>MISSED APPROACH: Climbing right turn to 6000 on LVD VOR/DME R-071 to LVD VOR/DME and hold.</p>
--	---

AWOS-3P <b>128.5</b>	ANCHORAGE CENTER <b>118.0</b>	SITKA RADIO <b>122.45</b>	CTAF <b>122.6</b>
-------------------------	----------------------------------	------------------------------	----------------------



CATEGORY	A	B	C	D	REIL Rwys 10 and 28 HIRL Rwy 10-28
CIRCLING		NA		3260-3 3216 (3300-3)	

AK, 03 NOV 2022 to 29 DEC 2022

AK, 03 NOV 2022 to 29 DEC 2022