

|  |                        |   |
|--|------------------------|---|
| WAAS<br>CH <b>86805</b><br><b>W36A</b> | APP CRS<br><b>005°</b> | Rwy ldg <b>4999</b><br>TDZE <b>417</b><br>Apt Elev <b>418</b> |
|--|------------------------|---|

# RNAV (GPS) RWY 36

PERRY-HOUSTON COUNTY (PXE)

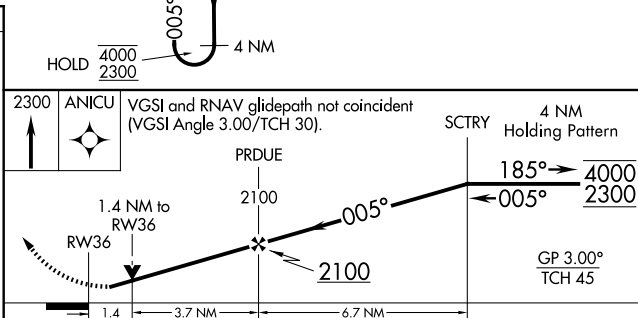
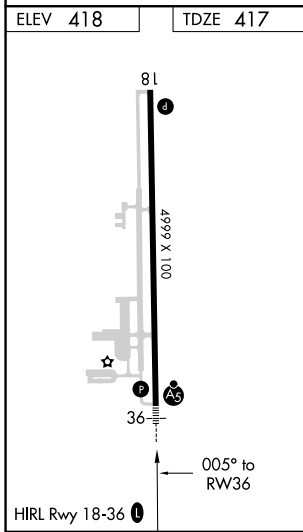
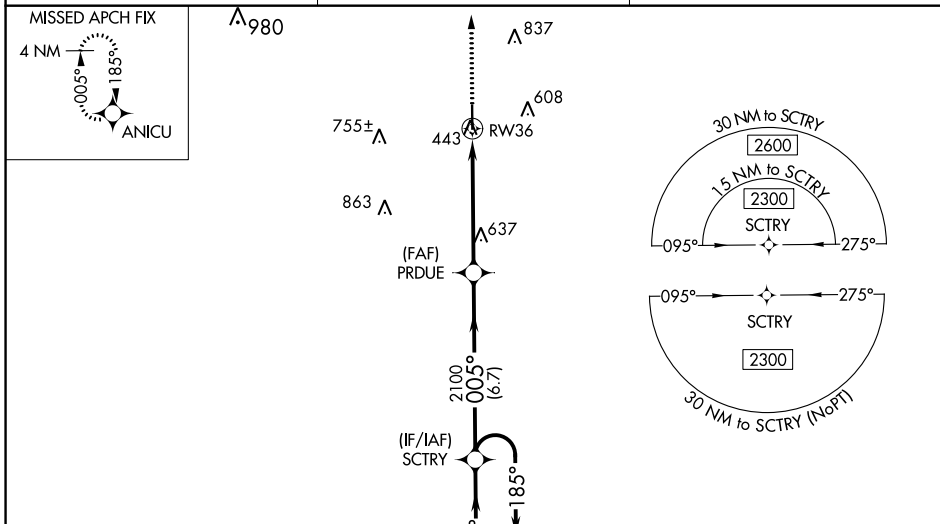
RNP APCH-GPS.

**⚠** Baro-VNAV and VDP NA when using Middle Georgia Rgnl altimeter setting. Rwy 36 helicopter visibility reduction below 3/4 SM NA. Inop table does not apply to LPV and LANV/VNAV all Cats. For uncompensated Baro-VNAV systems, LNAV/VNAV NA below -15°C or above 54°C. When local altimeter setting not received, use Middle Georgia Rgnl altimeter setting and increase LPV DA and LNAV/VNAV DA to 705 feet; increase all MDAs 40 feet; and Circling visibility Cat C/D 1/2 SM. For inop ALS, increase LNAV Cats A/B visibility to 1 SM and Cat C/D to 1 3/8 SM. For inop ALS, when using Middle Georgia Rgnl altimeter setting; increase LPV and LNAV/VNAV all Cats visibility to 3/8 SM and LNAV Cat A/B visibility to 1 SM.

MALSRS

**⚠ MISSED APPROACH:**  
Climb to 2300 direct ANICU and hold.

|                          |   |                                   |
|--------------------------|---|-----------------------------------|
| AWOS-3<br><b>123.825</b> | ATLANTA APP CON ★<br><b>124.2 279.6</b> | UNICOM<br><b>122.725 (CTAF) 0</b> |
|--------------------------|---|-----------------------------------|



| CATEGORY          | A       | B             | C                     | D                             |
|-------------------|---------|---------------|-----------------------|-------------------------------|
| LPV DA            |         | 667-3/4       | 250 (300-3/4)         |                               |
| LNAV/VNAV DA      |         | 667-3/4       | 250 (300-3/4)         |                               |
| LNAV MDA          | 900-3/4 | 483 (500-3/4) | 900-1                 | 483 (500-1)                   |
| <b>C</b> CIRCLING | 900-1   | 482 (500-1)   | 1140-2<br>722 (800-2) | 1280-2 3/4<br>862 (900-2 3/4) |

SE-4, 01 DEC 2022 to 29 DEC 2022

SE-4, 01 DEC 2022 to 29 DEC 2022