

WAAS CH <b>40340</b> <b>W35A</b>	APP CRS <b>346°</b>	Rwy Idg <b>3503</b> TDZE <b>665</b> Apt Elev <b>665</b>
--	------------------------	---

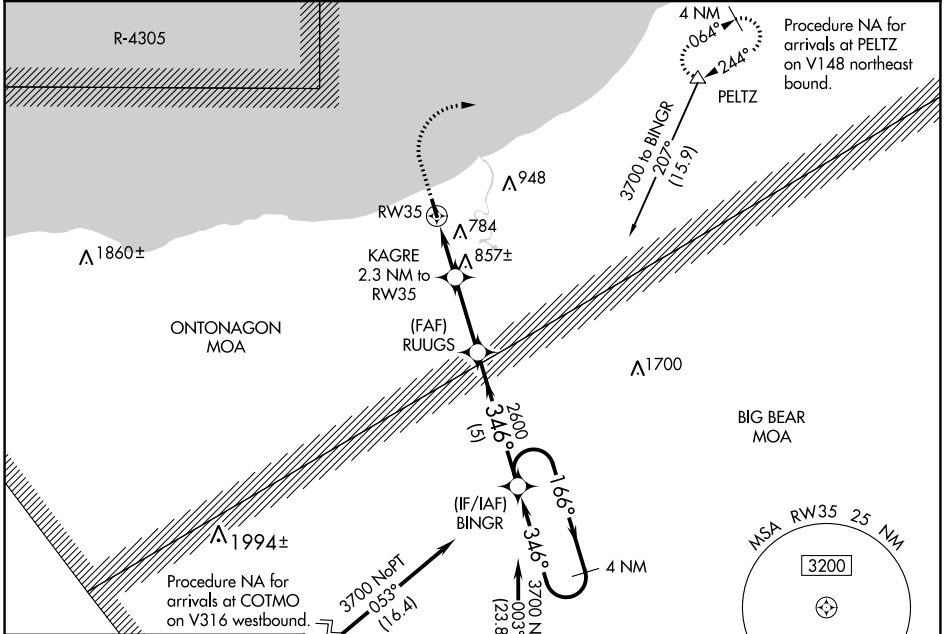
# RNAV (GPS) RWY 35

ONTONAGON COUNTY - SCHUSTER FLD (OGM)

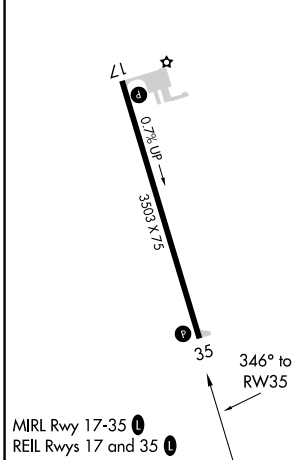
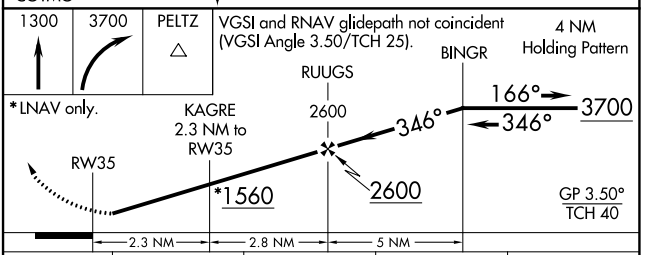
**NA** Baro-VNAV NA.  
Rwy 35 helicopter visibility reduction below 3/4 SM NA.  
DME/DME RNP-0.3 NA. Use Hancock altimeter setting.

MISSED APPROACH: Climb to 1300 then climbing right turn to 3700 direct PELTZ and hold, continue climb-in-hold to 3700.

CMX ASOS <b>125.675</b>	MINNEAPOLIS CENTER <b>133.55 379.1</b>	CTAF <b>122.9</b>
----------------------------	---	----------------------



ELEV <b>665</b>	TDZE <b>665</b>
-----------------	-----------------



CATEGORY	A	B	C	D
LPV DA	1152-1½		487 (500-1½)	NA
LNAV/VNAV DA	1301-1⅞		636 (700-1⅞)	NA
LNAV MDA	1280-1	615 (700-1)	1280-1¼ 615 (700-1¼)	NA
<b>C</b> CIRCLING	1320-1	655 (700-1)	1420-2¼ 755 (800-2¼)	NA

EC-1, 01 DEC 2022 to 29 DEC 2022

EC-1, 01 DEC 2022 to 29 DEC 2022