

WAAS CH <b>73002</b> <b>W18A</b>	APP CRS <b>183°</b>	Rwy Idg TDZE Apt Elev	<b>4701</b> <b>2309</b> <b>2313</b>
--	------------------------	-----------------------------	---

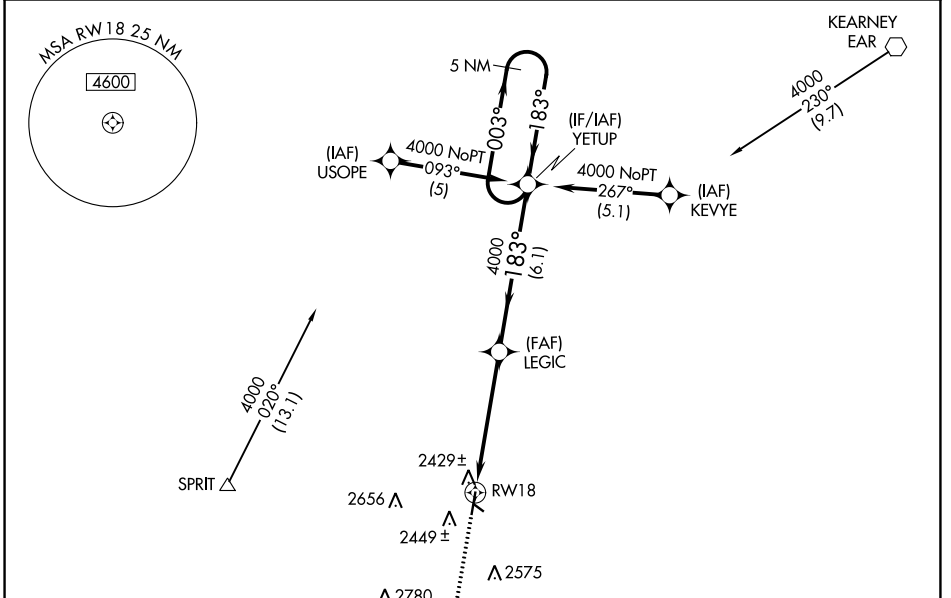
# RNAV (GPS) RWY 18

BREWSTER FLD (HDE)

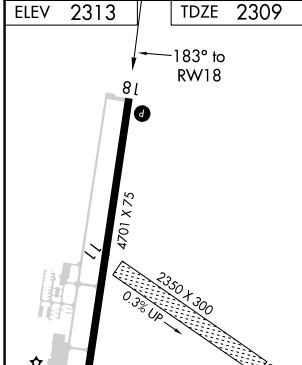
**▽** When local altimeter setting not received, use Kearney altimeter setting and increase DA to 2639 feet and all MDAs 80 feet, and increase Circling Cats C/D visibility ¼ SM. DME/DME RNP-0.3 NA. VDP NA when using Kearney altimeter setting.

**▲** MISSED APPROACH: Climb to 3900 direct BULIA and hold.

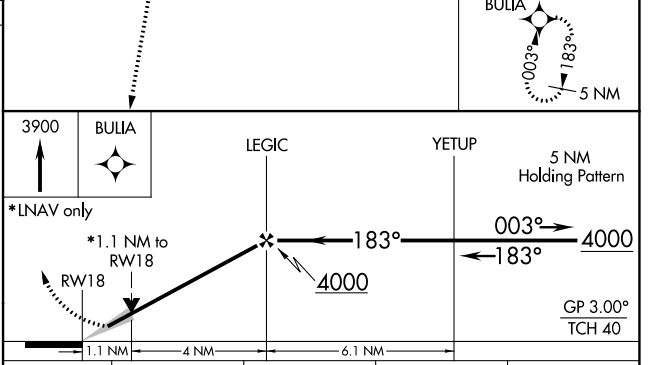
AWOS-3 <b>121.325</b>	DENVER CENTER <b>132.7 226.675</b>	UNICOM <b>122.8 (CTAF) 0</b>
--------------------------	---------------------------------------	---------------------------------



ELEV 2313	TDZE 2309
-----------	-----------



MIRL Rwy 18-36 0	REIL Rwy 18 and 36 0
------------------	----------------------



CATEGORY	A	B	C	D
LPV DA	2559-1 250 (300-1)			
LNAV MDA	2680-1 371 (400-1)			2680-1¼ 371 (400-1¼)
CIRCLING	2840-1 527 (600-1)		3020-2 707 (800-2)	3020-2¼ 707 (800-2¼)

NC-2, 01 DEC 2022 to 29 DEC 2022

NC-2, 01 DEC 2022 to 29 DEC 2022