

VOR EAR 111.2	APP CRS 217°	Rwy Idg TDZE Apt Elev	N/A N/A 2313
-------------------------	------------------------	-----------------------------	---

VOR-A

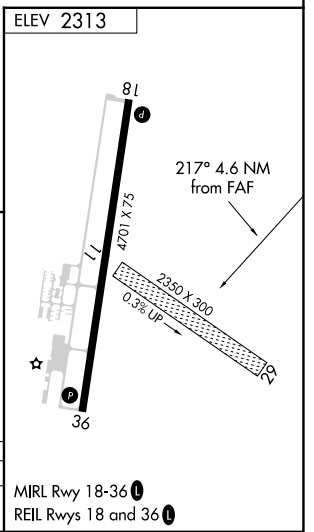
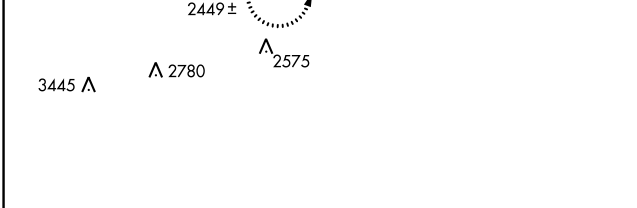
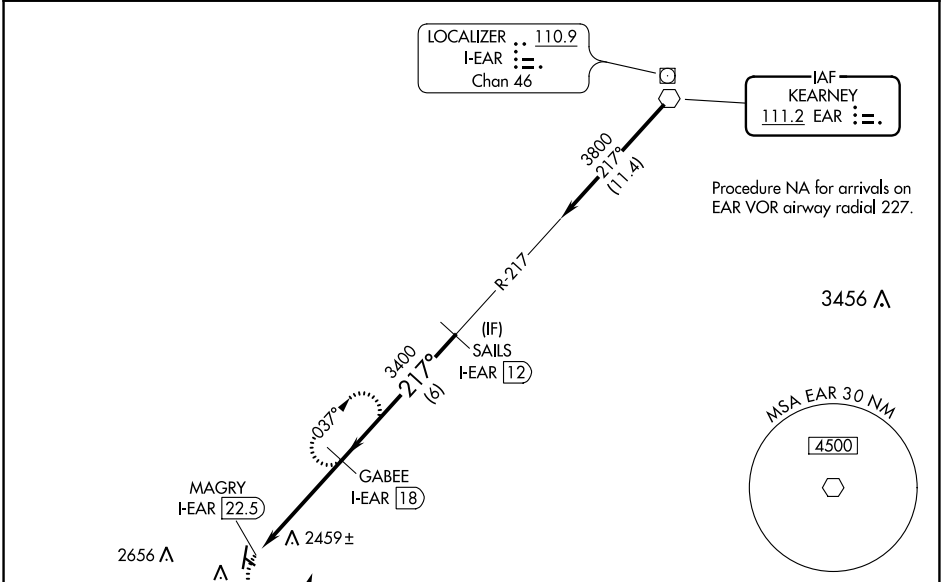
BREWSTER FLD (HDE)

DME required.

▽ DME from I-EAR localizer.
▲ Simultaneous reception of EAR VOR and I-EAR DME required.
 When local altimeter setting not received, use Kearney altimeter setting and increase all MDA 80 feet and increase all visibilities ¼ SM.

MISSED APPROACH: Climbing left turn to 3900 on EAR VOR R-217 to GABEE/I-EAR 18 DME and hold.

AWOS-3 121.325	DENVER CENTER 132.7 226.675	UNICOM 122.8 (CTAF) 0
--------------------------	---------------------------------------	---------------------------------



3900 EAR R-217	GABEE I-EAR (18)	GABEE I-EAR (18)	SAILS I-EAR (12)
MAGRY I-EAR (22.5)	3400	3800	
4.6 NM	6 NM		

CATEGORY	A	B	C	D
C CIRCLING	3100-1 787 (800-1)	3100-1¼ 787 (800-1¼)	3100-2¼ 787 (800-2¼)	3100-2½ 787 (800-2½)

MIRL Rwy 18-36
 REIL Rwys 18 and 36

NC-2, 01 DEC 2022 to 29 DEC 2022

NC-2, 01 DEC 2022 to 29 DEC 2022