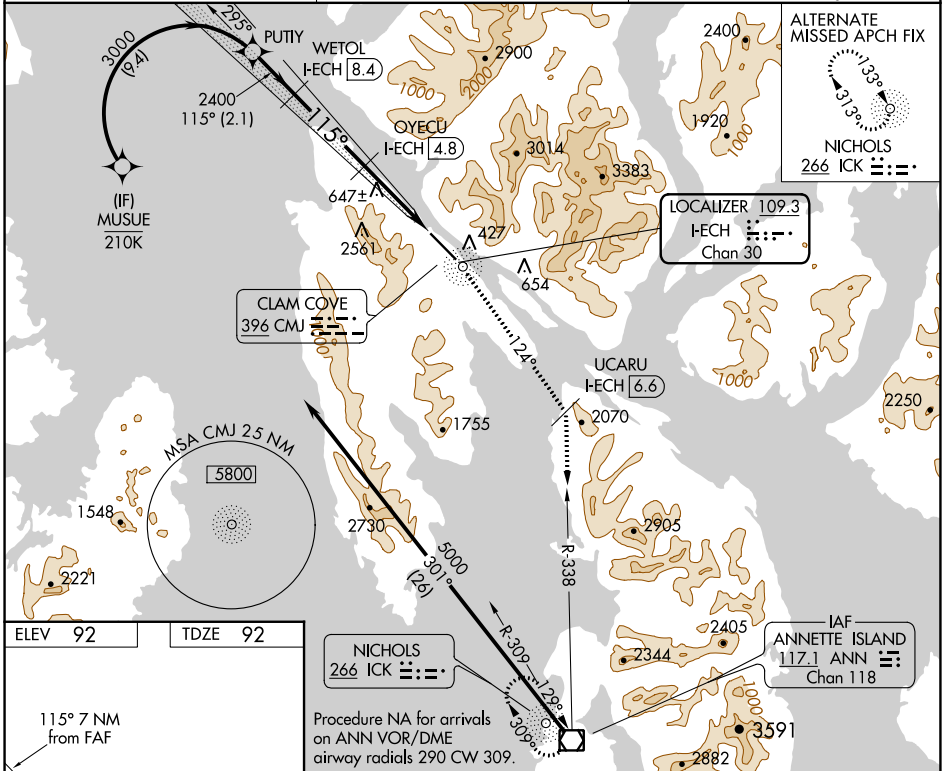


LOC/DME I-ECH 109.3 Chan 30	APP CRS 115°	Rwy Idg 7500 TDZE 92 Apt Elev 92
<p>RF, GPS, DME and ADF required. For inop MALSR, increase S-LOC 11 Cats C and D visibility to 2½. #RVR 1800 authorized with the use of FD or AP or HUD to DA.</p>		

ILS Z or LOC Z RWY 11

KETCHIKAN INTL (KTN)(PAKT)

AFIS 134.45	ANCHORAGE CENTER 118.5 284.6	KETCHIKAN RADIO 123.6 (CTAF)
-----------------------	--	--



ELEV 92	TDZE 92
<p>115° 7 NM from FAF</p>	
<p>WATER RWY: WNW-ESE 9500 X 1500</p>	
<p>HIRL Rwy 11-29</p>	

Procedure NA for arrivals on ANN VOR/DME airway radials 290 CW 309.

Use I-ECH DME when on the localizer course.

MUSUE	PUTIY	WETOL I-ECH 8.4	OYECU I-ECH 4.8	UCARU I-ECH 6.6	ANN R-338	ANN
5000	3000	2400	2400	2070	2070	2070
GS 3.00° TCH 50	115°	126°	126°	126°	126°	126°
9.4 NM	2.1 NM	3.6 NM	1.1 NM	2.3 NM		
CATEGORY	A	B	C	D		
#S-ILS 11	292/24 200 (200-½)					
S-LOC 11	880/24 788 (800-½)	880/40 788 (800-¾)	880-1¼ 788 (800-1¼)			

AK, 03 NOV 2022 to 29 DEC 2022

AK, 03 NOV 2022 to 29 DEC 2022