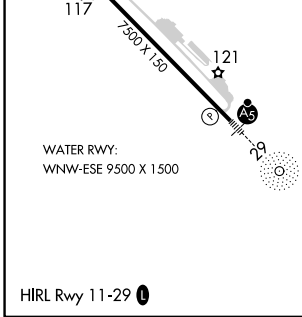
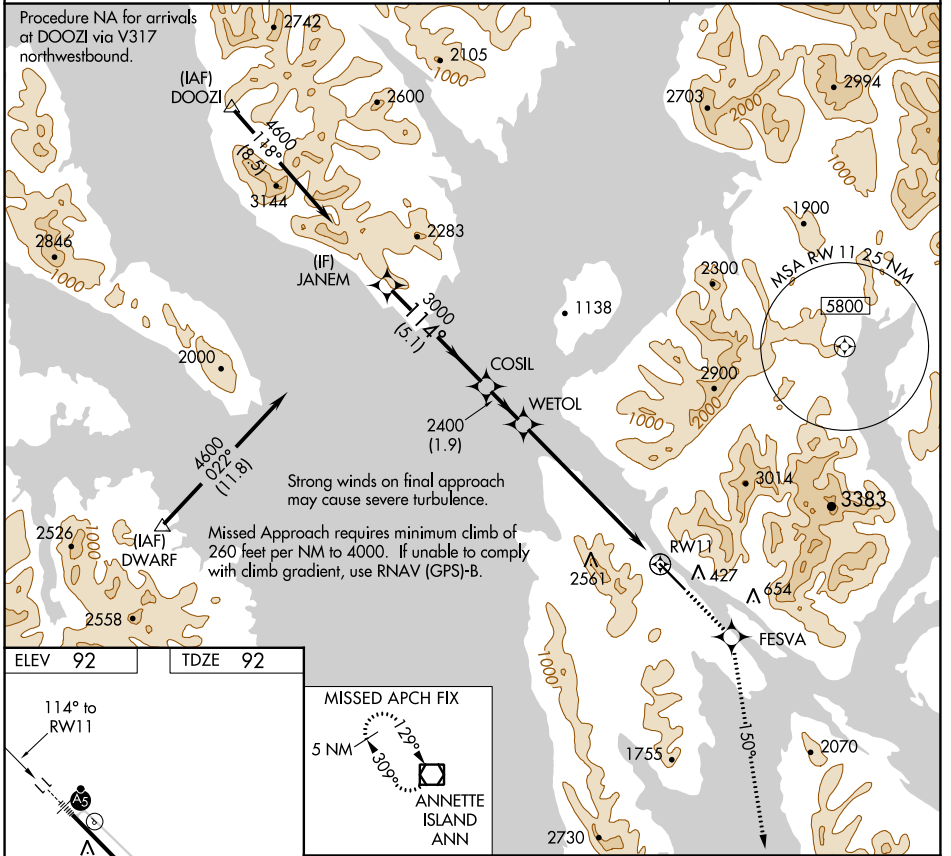


WAAS CH <b>58009</b> <b>W11A</b>	APP CRS <b>114°</b>	Rwy Idg TDZE Apt Elev	<b>7500</b> <b>92</b> <b>92</b>
--	------------------------	-----------------------------	---------------------------------------

# RNAV (GPS) RWY 11

KETCHIKAN INTL (KTN)(PAKT)

RNP APCH-GPS.		MALSRR	MISSED APPROACH: Climb to 5000 direct FESVA and on 150° track to ANN VOR/DME and hold.
▼ ▲ NA	For inoperative ALS, increase LPV DA visibility to RVR 6000.		
AFIS <b>134.45</b>	ANCHORAGE CENTER <b>118.5 284.6</b>	KETCHIKAN RADIO <b>123.6 (CTAF) 0</b>	



ELEV 92	TDZE 92	MISSED APCH FIX	
Procedure Turn NA	JANEM	COSIL	WETOL
4600	3000	2400	5000 FESVA 150° tr ANN
GP 3.00° TCH 50	5.1 NM	1.9 NM	6.8 NM RWY 11
CATEGORY	A	B	C
LPV DA	442/40 350 (400-3/4) NA		

AK, 03 NOV 2022 to 29 DEC 2022

AK, 03 NOV 2022 to 29 DEC 2022