

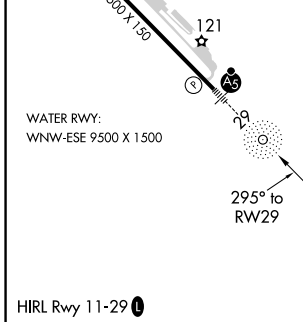
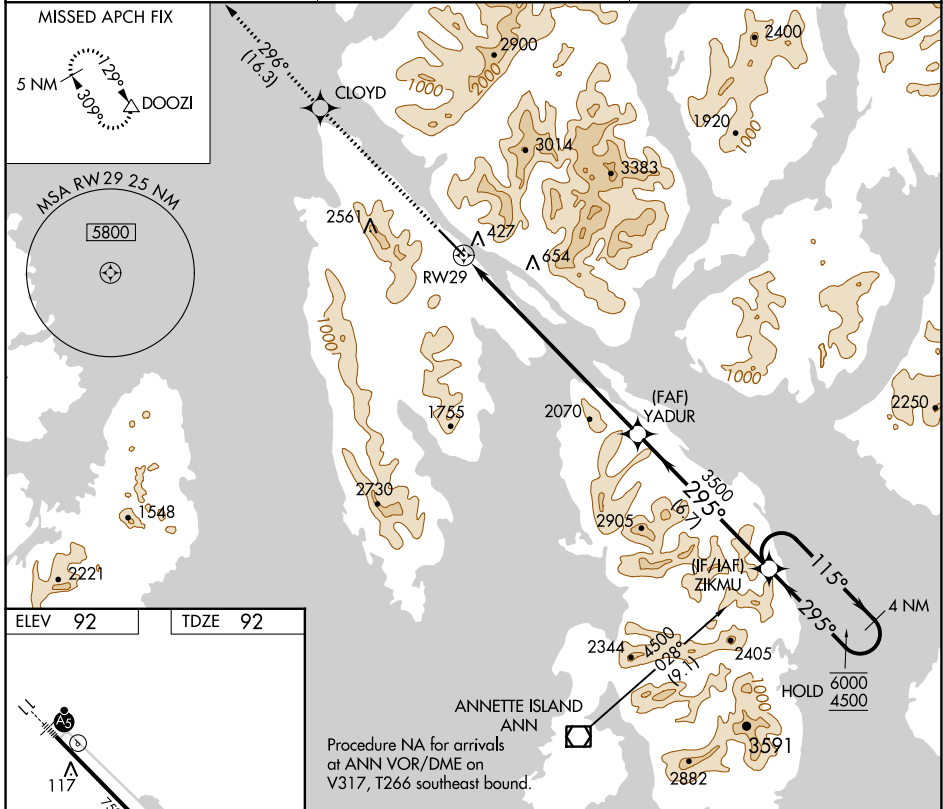
WAAS CH 40142 W29A	APP CRS 295°	Rwy Idg TDZE Apt Elev	7500 92 92
----------------------------------------	------------------------	-----------------------------	---------------------------------------

RNAV (GPS) RWY 29

KETCHIKAN INTL (KTN)(PAKT)

RNP APCH.	MALS R	MISSED APPROACH: Climb to 5000 direct CLOYD and on track 296° to DOOZI and hold. *Missed approach requires minimum climb of 425 feet per NM to 2160; If unable to meet climb gradient, see RNAV (GPS)-B.
▼ ▲ NA For inop ALS, increase all Cats visibility to 1¼ SM.	AS	

AFIS 134.45	ANCHORAGE CENTER 118.5 284.6	KETCHIKAN RADIO 123.6 (CTAF) 0
-----------------------	----------------------------------------	------------------------------------------



5000	CLOYD	tr 296°	DOOZI	VGSI and RNAV glidepath not coincident (VGSI Angle 3.00/TCH 49).	4 NM Holding Pattern
↑	◆		△		ZIKMU
					YADUR
					RW29
					3500
					3500
					115° → 6000
					← 295° 4500
					GP 3.55°
					TCH 50

CATEGORY	A	B	C	D
LPV DA*	722-1¾	630 (700-1¾)		NA

AK, 03 NOV 2022 to 29 DEC 2022

AK, 03 NOV 2022 to 29 DEC 2022