

SC-5, 01 DEC 2022 to 29 DEC 2022

CINC DEL  
 121.15  
 CTAF  
 123.05  
 HOUSTON DEP CON  
 123.8 257.7

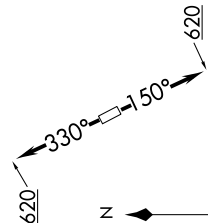
NOTE: RNAV 1.

NOTE: RADAR required.

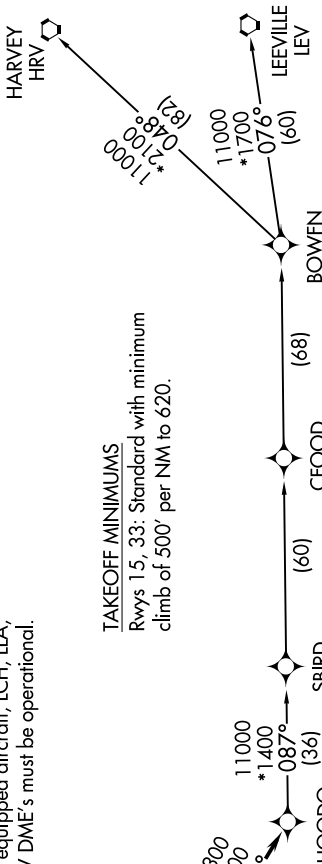
NOTE: ATC assigned only.

NOTE: DME/DME/IRU or GPS required.

NOTE: For non-GPS equipped aircraft, LCH, ILLA, TBD, and LEV DME's must be operational.



TAKEOFF MINIMUMS  
 Rwy's 15, 33: Standard with minimum climb of 500' per NM to 620.



**TOP ALTITUDE:  
 ASSIGNED BY ATC**

NOTE: Chart not to scale.

**DEPARTURE ROUTE DESCRIPTION**

TAKEOFF RUNWAY 15: Climb on heading 150° to 620, for RADAR vectors to VUH VOR/DME, thence . . . .

TAKEOFF RUNWAY 33: Climb on heading 330° to 620, for RADAR vectors to VUH VOR/DME, thence . . . .

. . . . on track 118° to HOODO, then on (transition). Maintain ATC assigned altitude.  
 Expect filed altitude 10 minutes after departure.

- BOWFN TRANSITION (HOODO7.BOWFN)
- CFOOD TRANSITION (HOODO7.CFOOD)
- HARVEY TRANSITION (HOODO7.HRV)
- LEEVILLE TRANSITION (HOODO7.LEV)
- SBIRD TRANSITION (HOODO7.SBIRD)

SC-5, 01 DEC 2022 to 29 DEC 2022