

APP CRS	Rwy Idg	<b>3800</b>
<b>180°</b>	TDZE	<b>437</b>
	Apt Elev	<b>437</b>

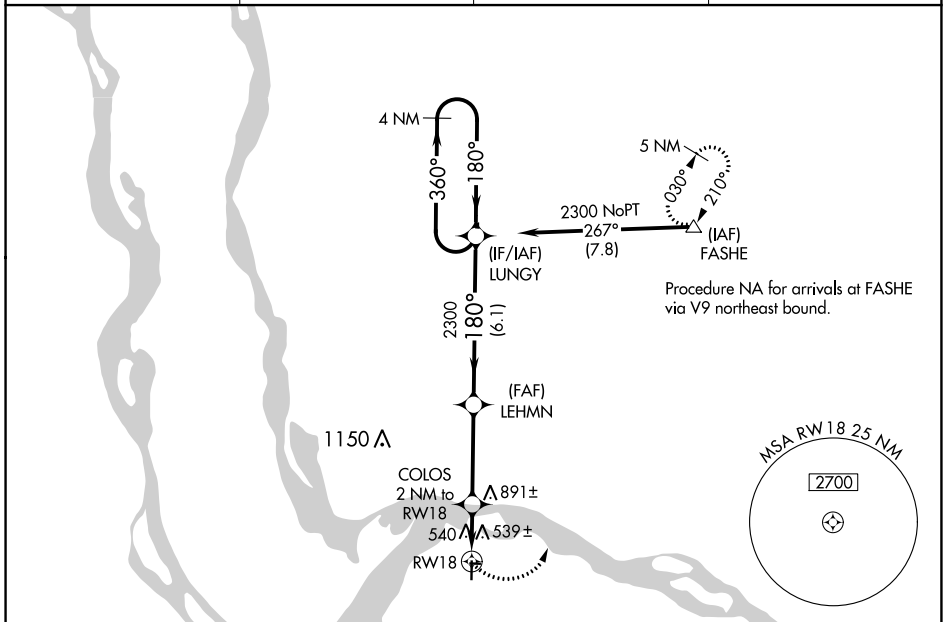
# RNAV (GPS) RWY 18

ST CHARLES COUNTY SMARTT (S/E/T)

**⚠** DME/DME RNP-0.3 NA. When local altimeter setting not received, use St Louis Lambert Intl altimeter setting and increase all MDAs 60 feet; increase visibility Cat C ¼ SM. VDP NA with St Louis Lambert Intl altimeter setting.

**⚠** MISSED APPROACH: Climbing left turn to 2700 direct FASHE and hold.

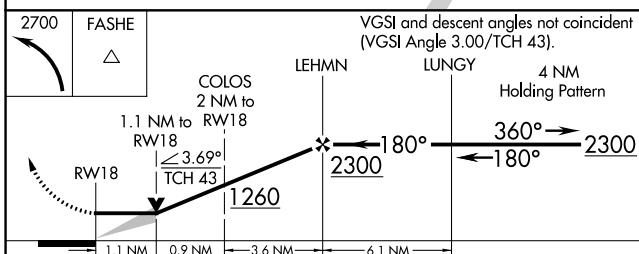
ASOS <b>118.075</b>	ST. LOUIS APP CON <b>124.2 353.9</b>	CLNC DEL <b>121.6</b>	UNICOM <b>122.7 (CTAF)</b> <b>📻</b>
------------------------	---	--------------------------	--



NC-3, 01 DEC 2022 to 29 DEC 2022

NC-3, 01 DEC 2022 to 29 DEC 2022

ELEV 437	TDZE 437
180° to RW18	



CATEGORY	A	B	C	D
RNAV MDA	840-1	403 (500-1)	840-1¼ 403 (500-1¼)	NA
CIRCLING	840-1 403 (500-1)	900-1 463 (500-1)	1220-2¼ 783 (800-2¼)	NA

