

WAAS CH <b>81831</b> <b>W15A</b>	APP CRS <b>157°</b>	Rwy Idg TDZE Apt Elev	<b>3808</b> <b>1230</b> <b>1230</b>
--	------------------------	-----------------------------	---

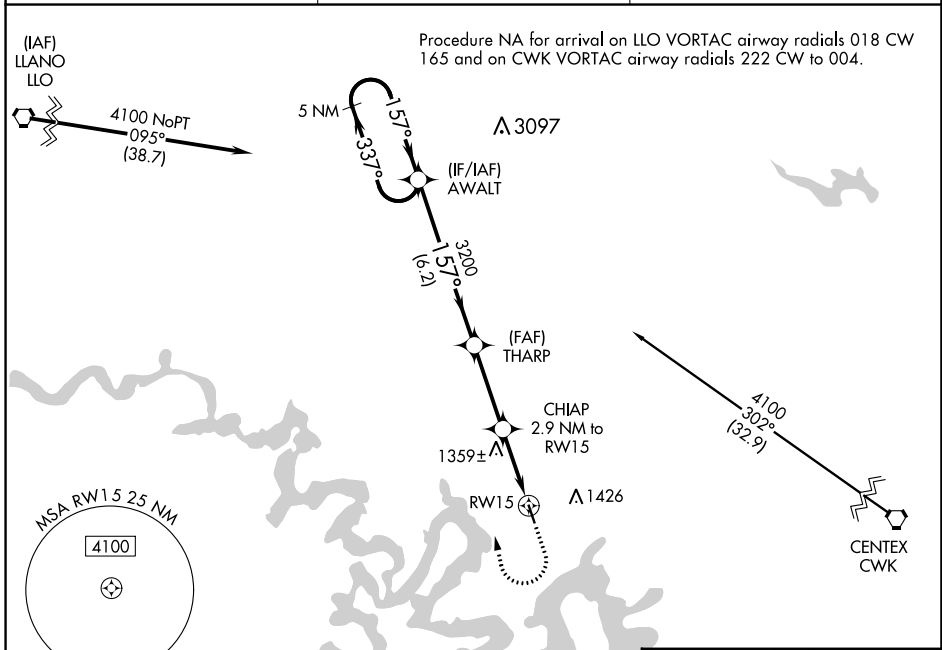
# RNAV (GPS) RWY 15

LAGO VISTA TX/RUSTY ALLEN (RYW)

**▼** For uncompensated Baro-VNAV systems, LNAV/VNAV NA below -17°C (2°F) or above 54°C (130°F). DME/DME RNP-0.3 NA.  
Rwy 15 helicopter visibility reduction below ¾ SM NA.

MISSED APPROACH: Climb to 1700 then climbing right turn to 4100 direct AWALT and hold.

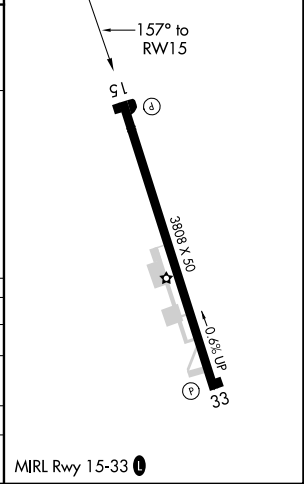
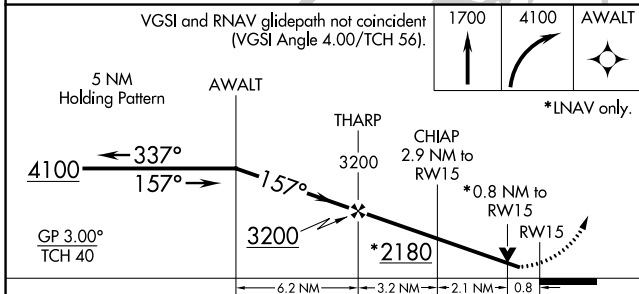
AWOS-3PT <b>119.375</b>	AUSTIN APP CON <b>119.0 370.85</b>	UNICOM <b>122.725</b> (CTAF) <b>①</b>
----------------------------	---------------------------------------	--



SC-3, 01 DEC 2022 to 29 DEC 2022

SC-3, 01 DEC 2022 to 29 DEC 2022

ELEV 1230	<b>D</b> TDZE 1230
-----------	--------------------



CATEGORY	A	B	C	D
LPV DA	1480-1	250 (300-1)		NA
LNAV/VNAV DA	1641-1⅜	411 (500-1⅜)		NA
LNAV MDA	1620-1	390 (400-1)		NA
<b>C</b> CIRCLING	1660-1 430 (500-1)	1860-1 630 (700-1)		NA