

WAAS CH 78432 W01B	APP CRS 006°	Rwy Idg TDZE 522 Apt Elev 522	5002
--	------------------------	---	-------------

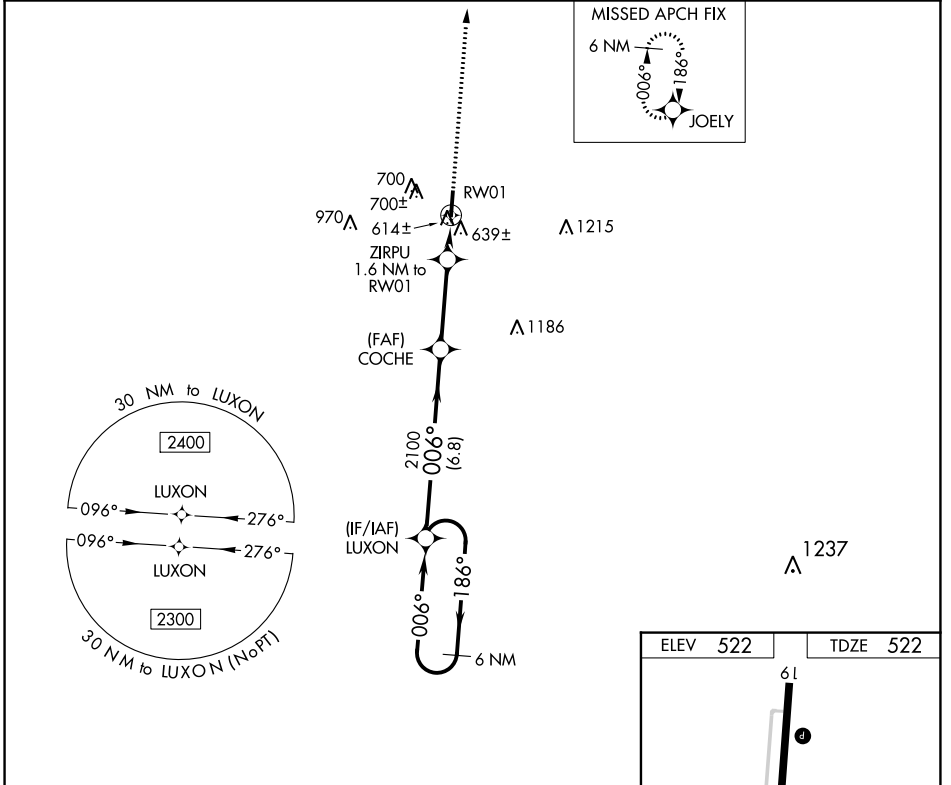
RNAV (GPS) Y RWY 1

MAYFIELD GRAVES COUNTY (M25)

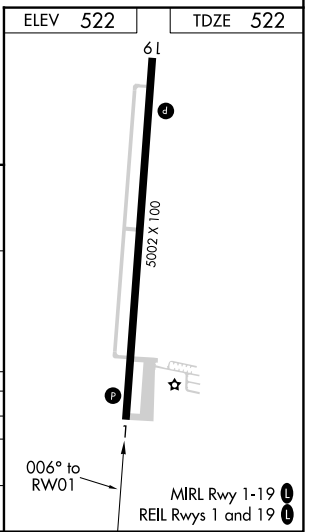
⚠ DME/DME RNP-0.3 NA. When local altimeter setting not received, use Paducah altimeter setting and increase all MDA 80 feet and increase LP Cat C and D visibility $\frac{3}{8}$ mile and LNAV Cat C and D visibility and Circling Cat C and D visibility $\frac{1}{4}$ mile. Rwy 1, 19 helicopter visibility reduction below 1 SM NA. Procedure NA at night.

MISSED APPROACH: Climb to 2400 direct JOELY and hold.

AWOS-3 120.625	MEMPHIS CENTER 133.65 292.15	UNICOM 122.8 (CTAF) ①
--------------------------	--	---------------------------------



6 NM Holding Pattern		LUXON	2400	JOELY
2300 ← 186°		→ 006°	↑	✦
		COCHE		
		ZIRPU 1.6 NM to RW01		
		3.00° TCH 40		
		2100		
		1060		
		6.8 NM	3.2 NM	1.6 NM
CATEGORY	A	B	C	D
LP MDA	880-1		358 (400-1)	
LNAV MDA	900-1 378 (400-1)		900-1½ 378 (400-1½)	
C CIRCLING	1060-1 538 (600-1)		1060-1½ 538 (600-1½) 1280-2½ 758 (800-2½)	



SE-1, 01 DEC 2022 to 29 DEC 2022

SE-1, 01 DEC 2022 to 29 DEC 2022