

WAAS CH 40216 W09A	APP CRS 094°	Rwy Idg 5390 TDZE 569 Apt Elev 569
--	------------------------	---

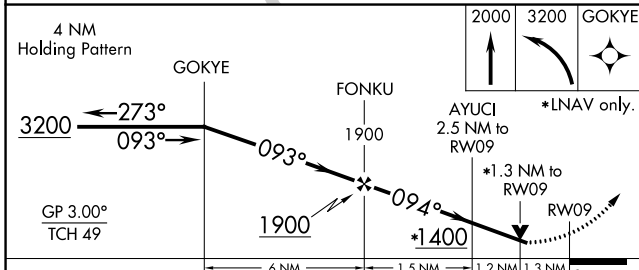
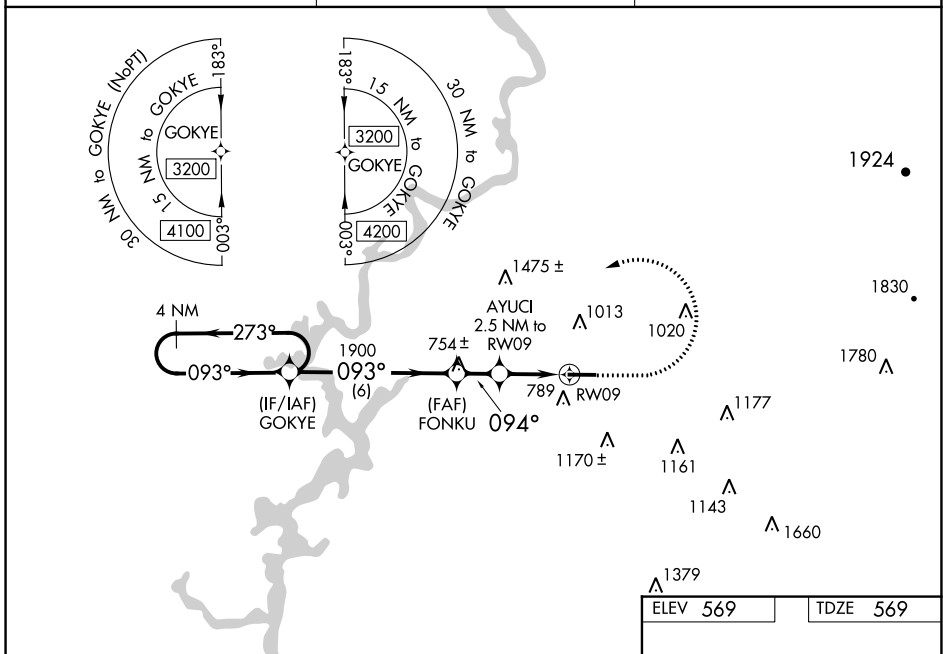
RNAV (GPS) RWY 9

MERKEL FLD SYLACAUGA MUNI (SCD)

⚠ Baro-VNAV NA when using Birmingham altimeter setting. For uncompensated Baro-VNAV systems, LNAV/VNAV NA below -20°C (-4°F) or above 54°C (130°F).
⚠ DME/DME RNP-0.3 NA. Helicopter visibility reduction below 3/4 SM NA. When local altimeter setting not received; use Birmingham altimeter setting and increase LPV DA to 1066, LNAV/VNAV DA to 1139 and all visibilities 3/8 mile. Increase all MDA 100 feet and LNAV Cats C and D visibility 1/8 mile. VDP NA when using Birmingham altimeter setting.

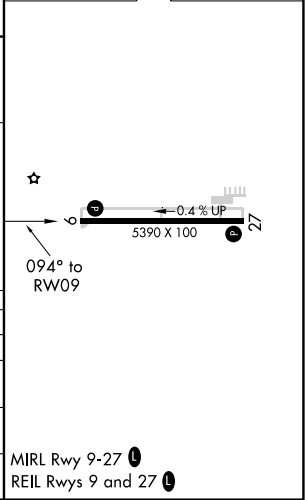
MISSED APPROACH: Climb to 2000 then climbing left turn to 3200 direct GOKYE and hold.

AWOS-3PT 119.125	BIRMINGHAM APP CON 123.8 256.8	UNICOM 122.8 (CTAF) 0
----------------------------	--	---------------------------------



ELEV 569	TDZE 569
----------	----------

CATEGORY	A	B	C	D
LPV DA		979-1 3/8	410 (500-1 3/8)	
LNAV/VNAV DA		1052-1 5/8	483 (500-1 5/8)	
LNAV MDA	1020-1	451 (500-1)	1020-1 3/8	451 (500-1 3/8)
CIRCLING	1140-1 571 (600-1)	1400-1 1/4 831 (900-1 1/4)	1620-3 1051 (1100-3)	1700-3 1131 (1200-3)



SE-4, 01 DEC 2022 to 29 DEC 2022

SE-4, 01 DEC 2022 to 29 DEC 2022