

WAAS CH 99627 W24A	APP CRS 239°	Rwy Idg 4600 TDZE 425 Apt Elev 428
--	------------------------	---

RNAV (GPS) RWY 24

MUHLENBERG COUNTY (M21)

RNP APCH - GPS.

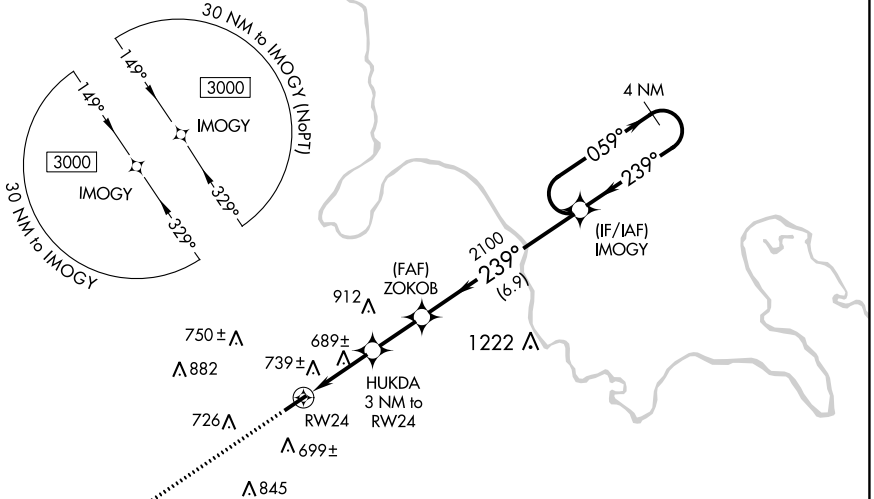
▽ **NA** When local altimeter setting not received, use Owensboro altimeter setting and increase all MDAs 80 feet. Increase LP Cats C/D visibility $\frac{3}{8}$ SM and LNAV Cats C/D and Circling Cats C/D visibility $\frac{1}{4}$ SM. Procedure NA at night. Rwy 24, helicopter visibility reduction below 1 SM NA.

MISSED APPROACH:
Climb to 3000 direct JEPAX and hold.

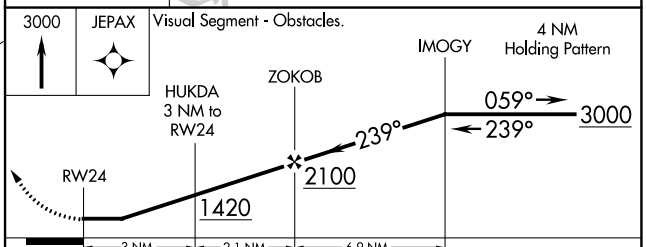
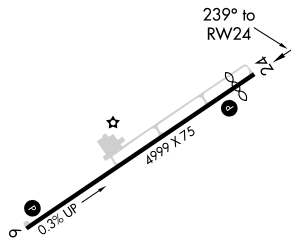
AWOS-3
120.45

CAMPBELL APP CON ★
118.1 269.525

UNICOM
123.0 (CTAF) **📻**



ELEV 428 **D** TDZE 425



CATEGORY	A	B	C	D
LP MDA	940-1	515 (600-1)	940- $\frac{1}{8}$	515 (600- $\frac{1}{8}$)
LNAV MDA	1000-1	575 (600-1)	1000- $\frac{1}{8}$	575 (600- $\frac{1}{8}$)
C CIRCLING	1040-1 612 (700-1)	1100-1 672 (700-1)	1180- $\frac{1}{4}$ 752 (800- $\frac{1}{4}$)	1200- $\frac{1}{2}$ 772 (800- $\frac{1}{2}$)

MIRL Rwy 6-24 **📻**
REIL Rwy 6 and 24 **📻**

SE-1, 01 DEC 2022 to 29 DEC 2022

SE-1, 01 DEC 2022 to 29 DEC 2022