

APP CRS <b>158°</b>	Rwy Idg <b>4499</b>
	TDZE <b>161</b>
	Apt Elev <b>160</b>

# RNAV (GPS) RWY 15

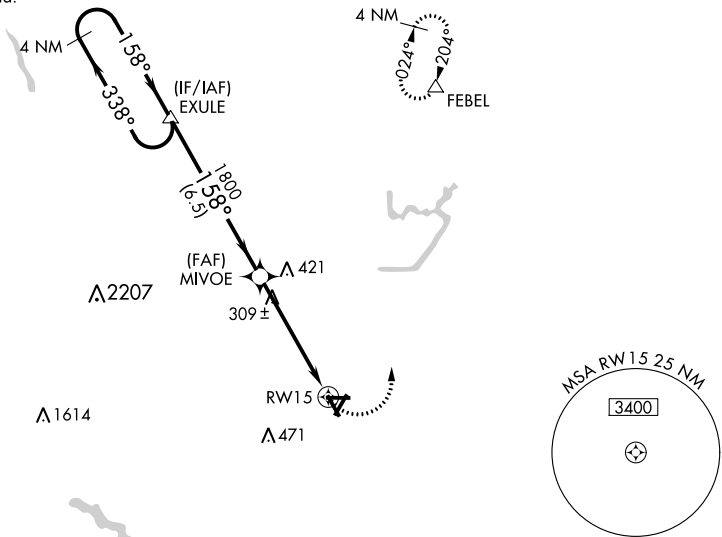
WILSON INDUSTRIAL AIR CENTER (W03)

**NA** DME/DME RNP-0.3 NA. Procedure NA at night. Visibility reduction by helicopters NA. Obtain local altimeter setting on CTAF; when not received use Rocky Mount altimeter setting.

MISSED APPROACH: Climbing left turn to 2500 direct FEBEL and hold.

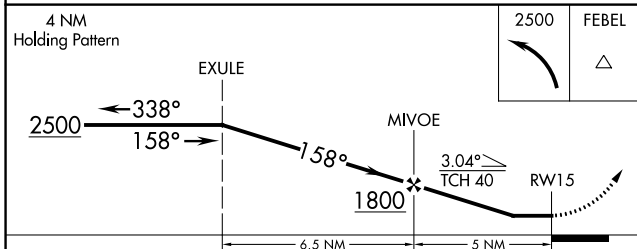
WASHINGTON CENTER <b>123.85 279.65</b>	UNICOM <b>123.0(CTAF) 0</b>
---	--------------------------------

NoPT for arrival at EXULE on V194-310 eastbound.



SE-2, 01 DEC 2022 to 29 DEC 2022

SE-2, 01 DEC 2022 to 29 DEC 2022



ELEV 160	TDZE 161
----------	----------

REIL Rwy 3 and 21 0  
MIRL Rwy 3-21 0

CATEGORY	A	B	C	D
RNAV MDA	560-1 399 (400-1)			560-1¼ 399 (400-1¼)
CIRCLING	660-1	500 (500-1)	780-1¾ 620 (700-1¾)	780-2 620 (700-2)
ROCKY MOUNT ALTIMETER SETTING MINIMUMS				
RNAV MDA	580-1 419 (500-1)		580-1¼ 419 (500-1¼)	
CIRCLING	680-1	520 (600-1)	800-1¾ 640 (700-1¾)	800-2 640 (700-2)