

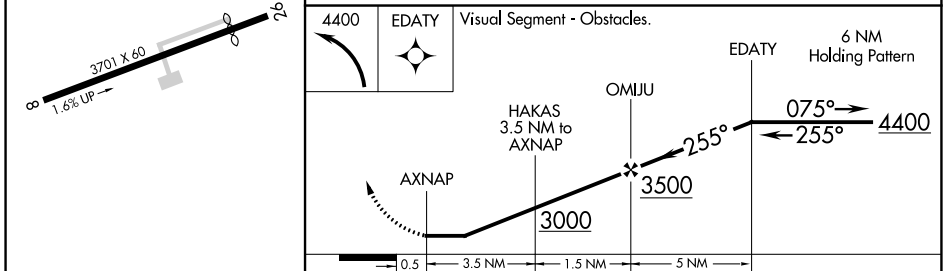
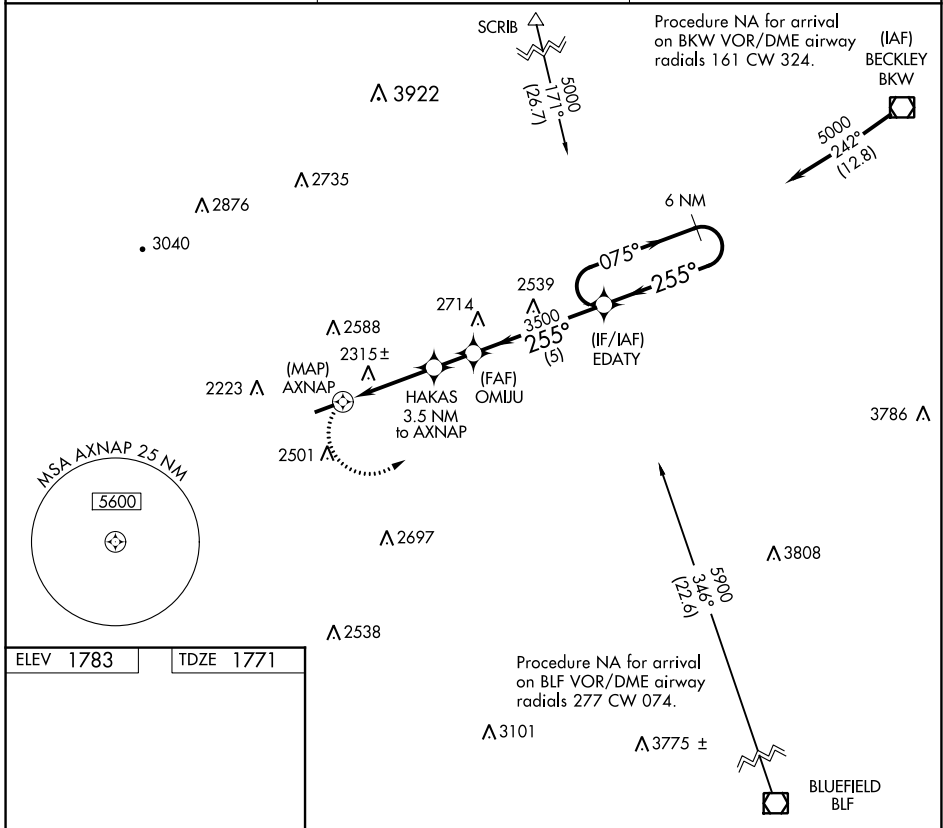
APP CRS <b>255°</b>	Rwy Idg <b>3111</b>
	TDZE <b>1771</b>
	Apt Elev <b>1783</b>

# RNAV (GPS) RWY 26

KEE FLD (I16)

RNP APCH - GPS.	MISSED APPROACH: Climbing left turn to 4400 direct EDATY and hold.
▼ Rwy 26 helicopter visibility reduction below 1 SM NA. ▲ NA Procedure NA at night.	

AWOS-3 <b>120.625</b>	CHARLESTON APP CON <b>125.4 269.125</b>	UNICOM <b>122.8 (CTAF)</b>
--------------------------	--	-------------------------------



MIRL Rwy 8-26				
REIL Rwy 8 and 26				
CATEGORY	A	B	C	D
LNAV MDA	2580-1 809 (800-1)	2580-1¼ 809 (800-1¼)	2580-2½ 809 (800-2½)	NA

NE-4, 01 DEC 2022 to 29 DEC 2022

NE-4, 01 DEC 2022 to 29 DEC 2022