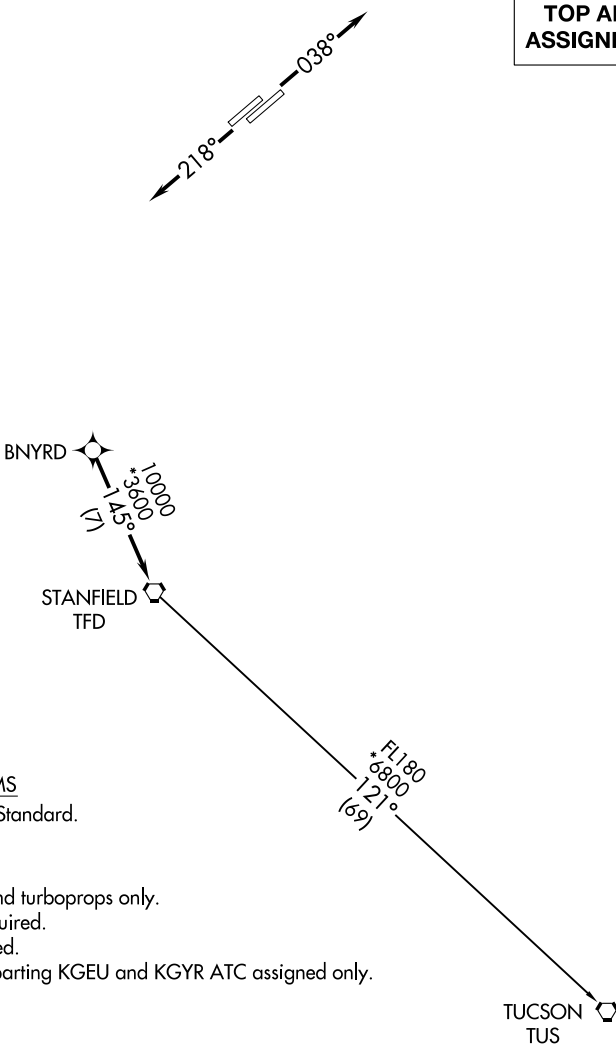


ATIS  
128.325  
GND CON  
124.4  
CHANDLER TOWER ★  
126.1 (Rwy 4L-22R)  
133.1 (Rwy 4R-22L)  
PHOENIX DEP CON  
123.7 363.0

TOP ALTITUDE:  
ASSIGNED BY ATC



TAKEOFF MINIMUMS  
Rwys 4L/R, 22L/R: Standard.

- NOTE: RNAV 1.  
NOTE: Turbojets and turboprops only.  
NOTE: RADAR required.  
NOTE: GPS required.  
NOTE: Aircraft departing KGEU and KGYR ATC assigned only.

NOTE: Chart not to scale.



DEPARTURE ROUTE DESCRIPTION

TAKEOFF RUNWAYS 4L/R: Climb heading 038° or as assigned by ATC, thence. . . .  
TAKEOFF RUNWAYS 22L/R: Climb heading 218° or as assigned by ATC, thence. . . .  
. . . expect RADAR vectors to BNYRD, then on track 145° to TFD VORTAC, then on  
(transition), maintain ATC assigned altitude, expect filed altitude 3 minutes after departure.  
TUCSON TRANSITION (BNYRD6.TUS)