

WAAS CH <b>86934</b> <b>W03A</b>	APP CRS <b>037°</b>	Rwy Idg TDZE <b>1370</b> Apt Elev <b>1372</b>	<b>5008</b>
--	------------------------	---	-------------

# RNAV (GPS) RWY 3

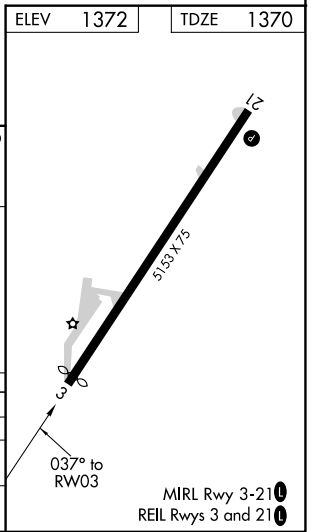
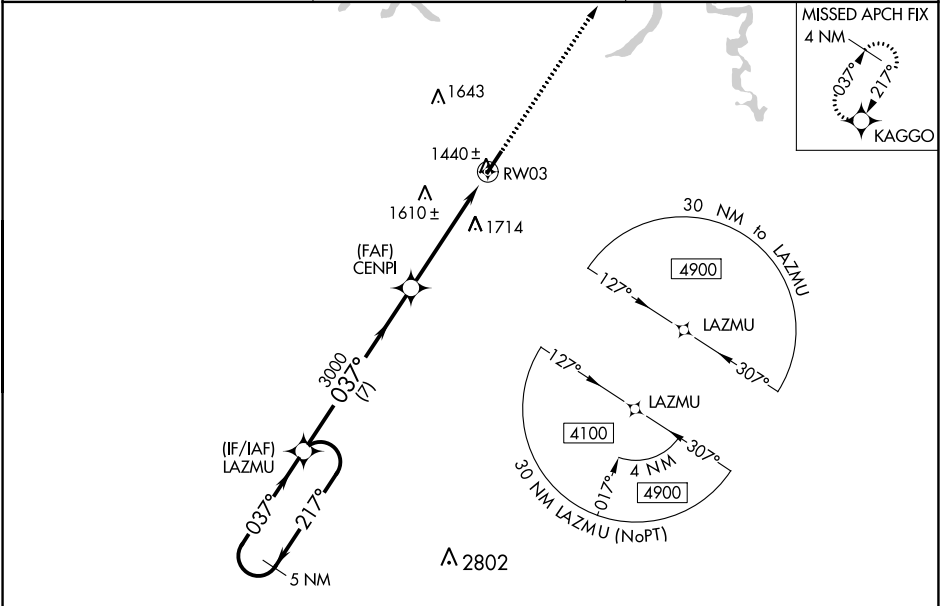
LIVINGSTON MUNI (8A.3)

RNP APCH - GPS.

**⚠** When local altimeter setting not received, use Crossville altimeter setting and increase all MDA 140 feet, and increase LP Cat C and D and LNAV Cat C and D visibility  $\frac{3}{8}$  mile, Circling Cat B visibility  $\frac{1}{4}$  mile and Circling Cat C and D visibilities  $\frac{1}{2}$  mile. Straight-in minimums NA at night, Circling Rwy 3 NA at night. Rwy 3 helicopter visibility reduction below 1 SM NA.

MISSED APPROACH:  
Climb to 4000 direct KAGGO and hold.

AWOS-3 <b>126.175</b>	INDIANAPOLIS CENTER <b>124.625 371.925</b>	UNICOM <b>122.8 (CTAF)</b>
--------------------------	---	-------------------------------



5 NM Holding Pattern	Visual Segment- Obstacles.				4000	KAGGO
LAZMU	CENPI	RWY 3				
4100	3000					
← 217°	037° →					
	7 NM	5 NM				

CATEGORY	A	B	C	D
LP MDA		1720-1	350 (400-1)	
LNAV MDA	1840-1	470 (500-1)	1840-1 $\frac{3}{8}$	470 (500-1 $\frac{3}{8}$ )
CIRCLING	1880-1 508 (600-1)	2080-1 708 (800-1)	2080-2 708 (800-2)	2360-3 988 (1000-3)

SE-1, 01 DEC 2022 to 29 DEC 2022

SE-1, 01 DEC 2022 to 29 DEC 2022